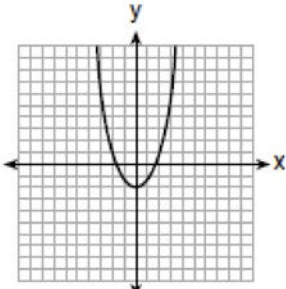
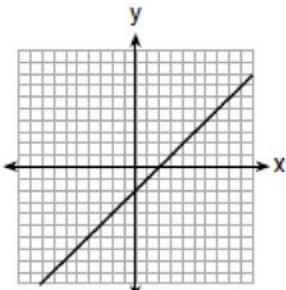


F.IF.C.7: Graphing Root Functions 1

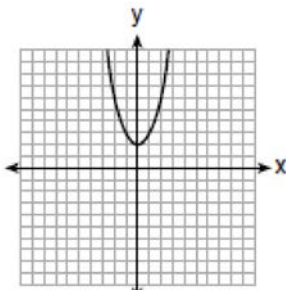
1 Which graph represents $y = \sqrt{x-2}$?



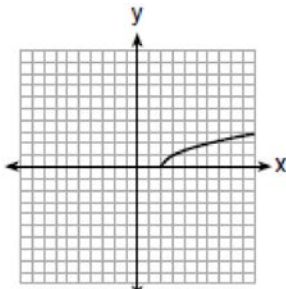
1)



2)

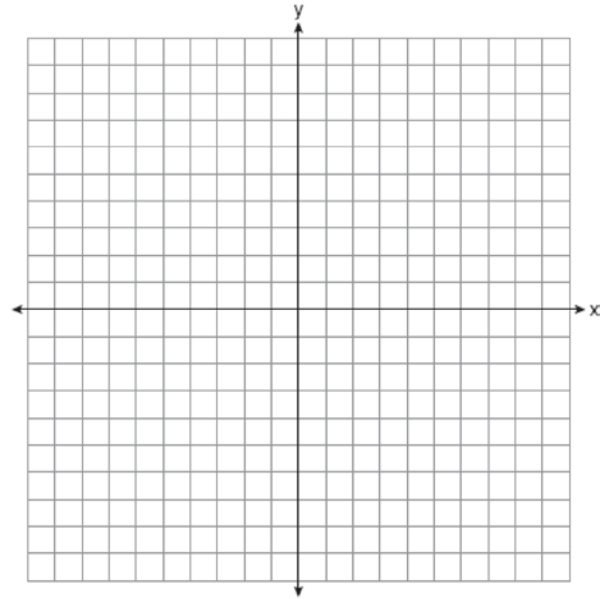


3)

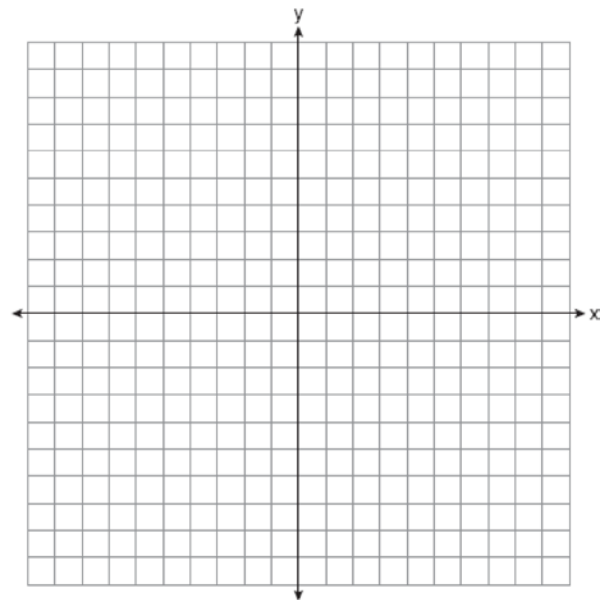


4)

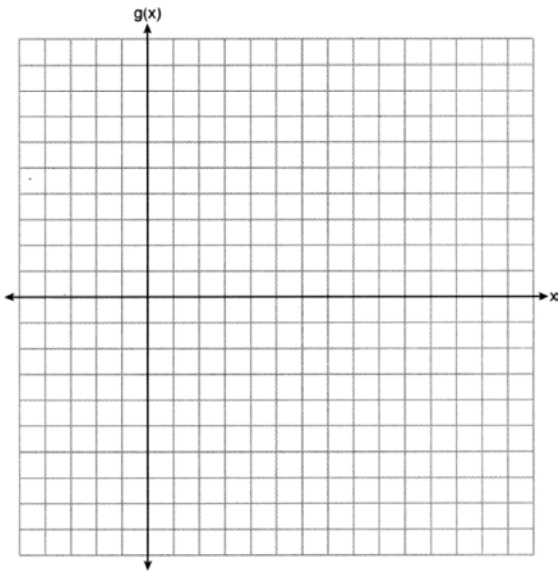
2 Draw the graph of $y = \sqrt{x} - 1$ on the set of axes below.



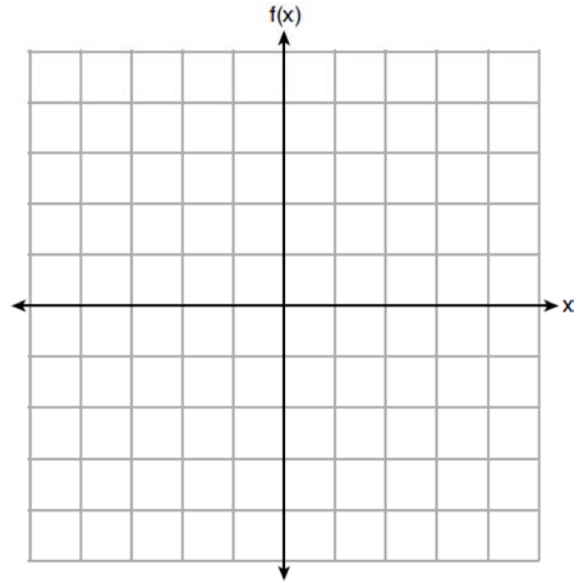
3 Graph $f(x) = \sqrt{x+2}$ over the domain $-2 \leq x \leq 7$.



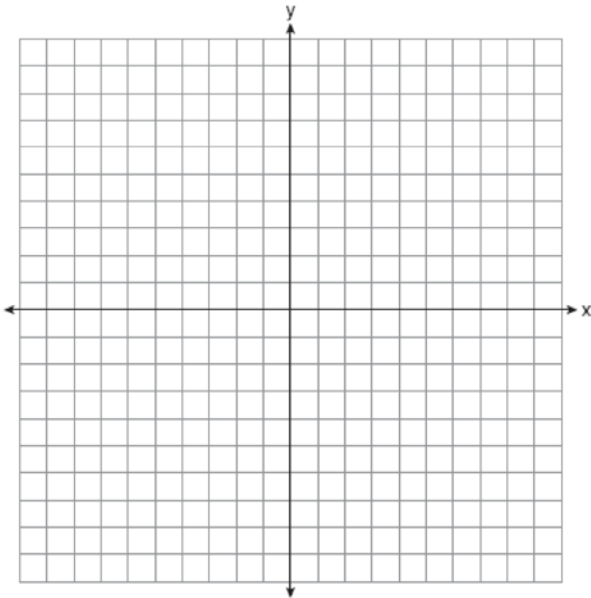
- 4 Graph the function $g(x) = \sqrt{x+3}$ on the set of axes below.



- 6 Graph $f(x) = -\sqrt{x} + 1$ on the set of axes below.



- 5 Graph the function $y = -\sqrt{x+3}$ on the set of axes below.

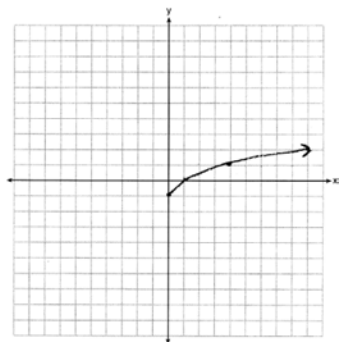


F.IF.C.7: Graphing Root Functions 1 Answer Section

1 ANS: 4

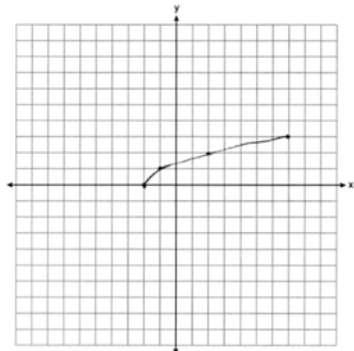
REF: 061703ai

2 ANS:



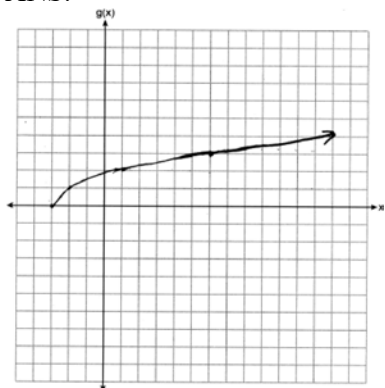
REF: 061425ai

3 ANS:



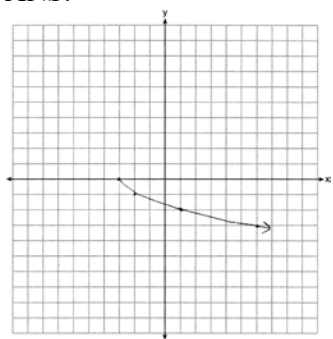
REF: 061825ai

4 ANS:



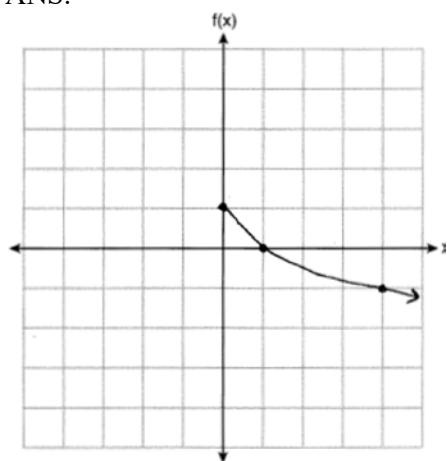
REF: 012325ai

5 ANS:



REF: 081625ai

6 ANS:



REF: 012025ai