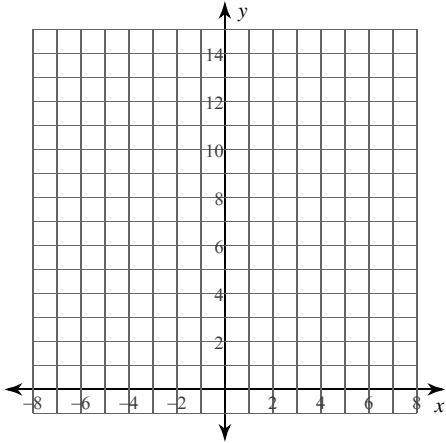


Calculus Practice: Riemann Sums 4a

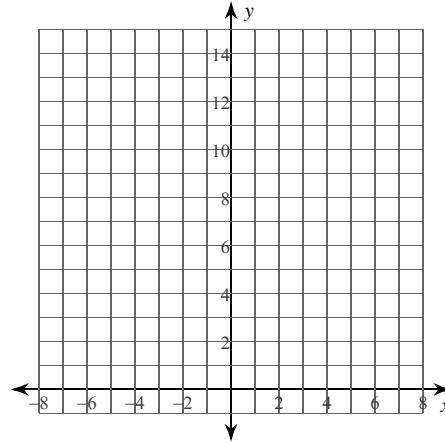
For each problem, approximate the area under the curve over the given interval using 4 trapezoids. You may use the provided graph to sketch the curve and trapezoids.

1) $y = -\frac{x}{2} + 4; [2, 4]$



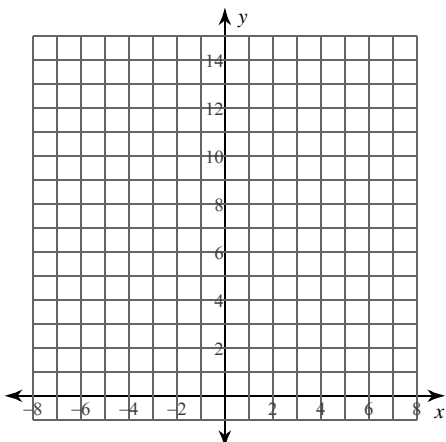
- A) $\frac{11}{2} = 5.5$ B) 5
 C) $\frac{9}{2} = 4.5$ D) $\frac{14}{3} \approx 4.667$

2) $y = -\frac{x}{2} + 6; [2, 4]$



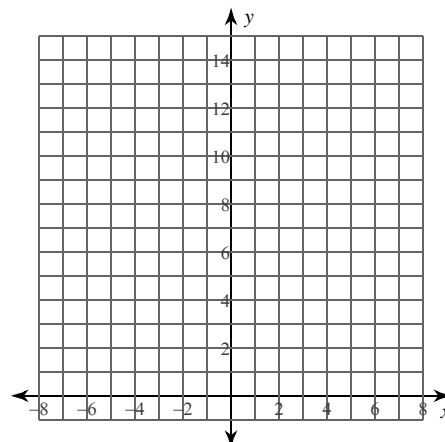
- A) 27 B) 18
 C) 9 D) 11

3) $y = x^2 + 2x + 3; [-2, 0]$



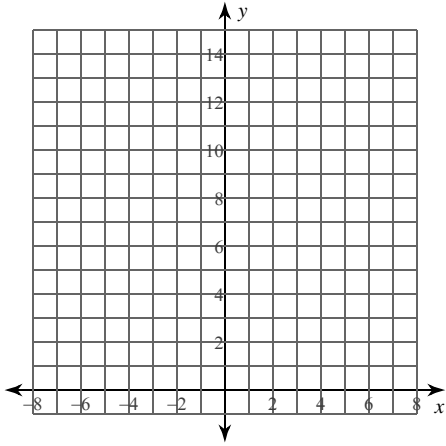
- A) $\frac{21}{4} = 5.25$ B) $\frac{27}{4} = 6.75$
 C) $\frac{57}{4} = 14.25$ D) $\frac{19}{4} = 4.75$

4) $y = -x^2 + 2x + 11; [-1, 1]$



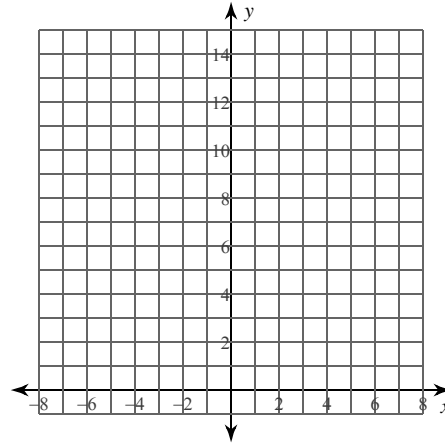
- A) $\frac{85}{2} = 42.5$ B) $\frac{77}{4} = 19.25$
 C) $\frac{255}{4} = 63.75$ D) $\frac{85}{4} = 21.25$

5) $y = -\frac{x^2}{2} - x + 5; [-1, 1]$



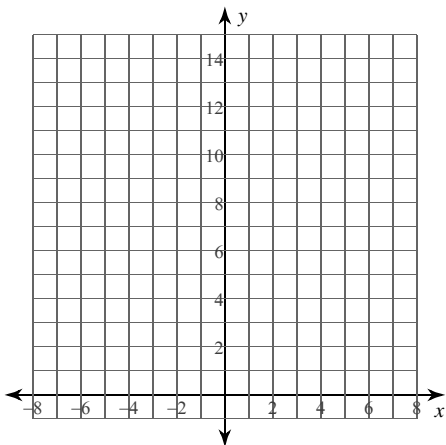
- A) $\frac{93}{8} = 11.625$
- B) $\frac{81}{8} = 10.125$
- C) $\frac{77}{8} = 9.625$
- D) $\frac{69}{8} = 8.625$

6) $y = \frac{3}{x}; [1, 3]$



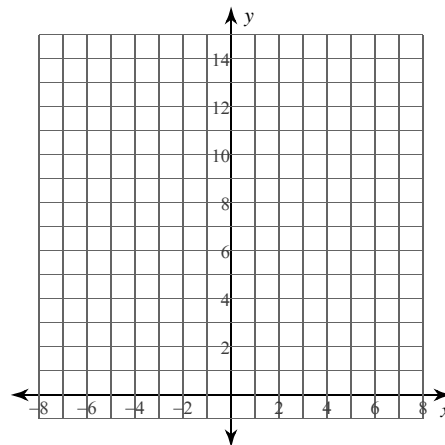
- A) $\frac{77}{20} = 3.85$
- B) $\frac{67}{20} = 3.35$
- C) $\frac{87}{20} = 4.35$
- D) $\frac{181}{60} \approx 3.017$

7) $y = -\frac{2}{x}; [-4, -2]$



- A) $\frac{509}{840} \approx 0.606$
- B) $\frac{751}{840} \approx 0.894$
- C) $\frac{1171}{280} \approx 4.182$
- D) $\frac{1171}{840} \approx 1.394$

8) $y = -\frac{1}{x}; [-5, -1]$

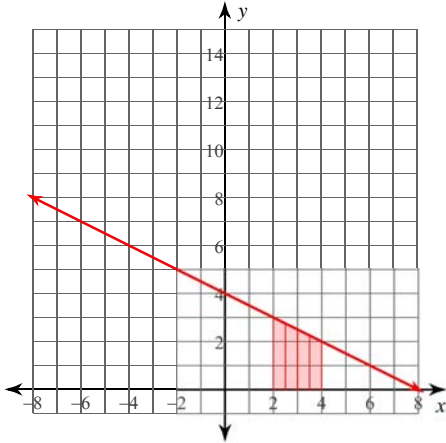


- A) $\frac{101}{60} \approx 1.683$
- B) $\frac{101}{30} \approx 3.367$
- C) $\frac{121}{60} \approx 2.017$
- D) $\frac{161}{60} \approx 2.683$

Calculus Practice: Riemann Sums 4a

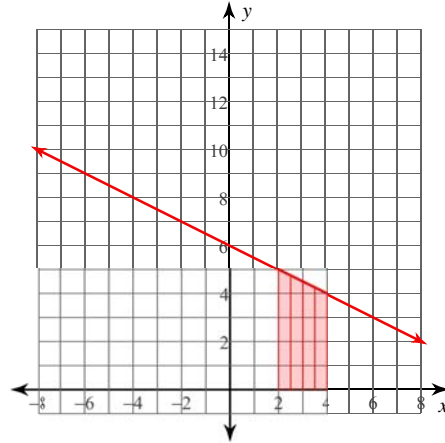
For each problem, approximate the area under the curve over the given interval using 4 trapezoids. You may use the provided graph to sketch the curve and trapezoids.

1) $y = -\frac{x}{2} + 4$; $[2, 4]$



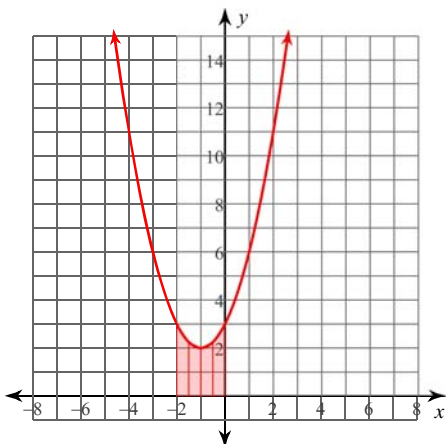
- A) $\frac{11}{2} = 5.5$ *B) 5
 C) $\frac{9}{2} = 4.5$ D) $\frac{14}{3} \approx 4.667$

2) $y = -\frac{x}{2} + 6$; $[2, 4]$



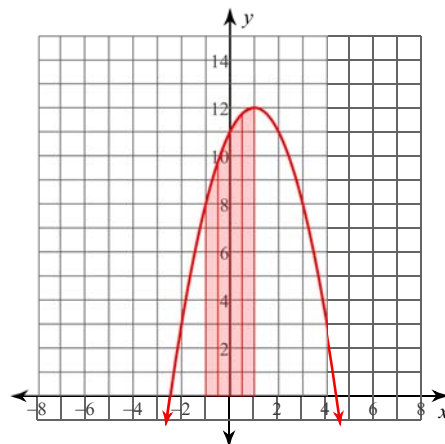
- A) 27 B) 18
 *C) 9 D) 11

3) $y = x^2 + 2x + 3$; $[-2, 0]$



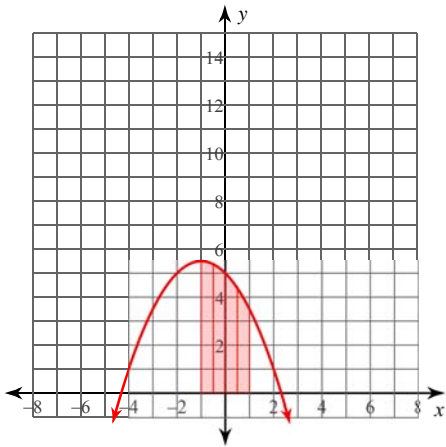
- A) $\frac{21}{4} = 5.25$ B) $\frac{27}{4} = 6.75$
 C) $\frac{57}{4} = 14.25$ *D) $\frac{19}{4} = 4.75$

4) $y = -x^2 + 2x + 11$; $[-1, 1]$



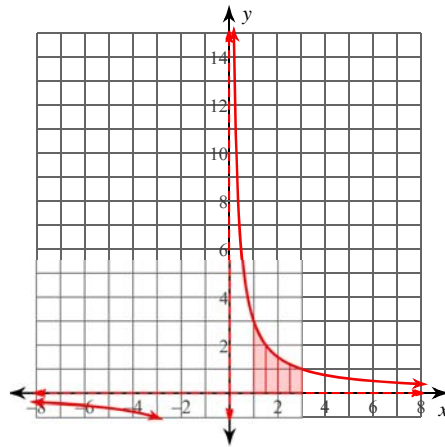
- A) $\frac{85}{2} = 42.5$ B) $\frac{77}{4} = 19.25$
 C) $\frac{255}{4} = 63.75$ *D) $\frac{85}{4} = 21.25$

5) $y = -\frac{x^2}{2} - x + 5; [-1, 1]$



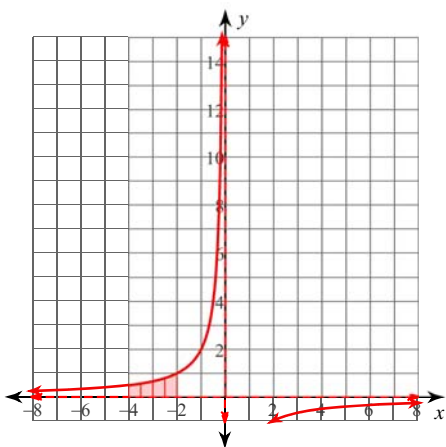
- A) $\frac{93}{8} \approx 11.625$
- B) $\frac{81}{8} \approx 10.125$
- *C) $\frac{77}{8} \approx 9.625$
- D) $\frac{69}{8} \approx 8.625$

6) $y = \frac{3}{x}; [1, 3]$



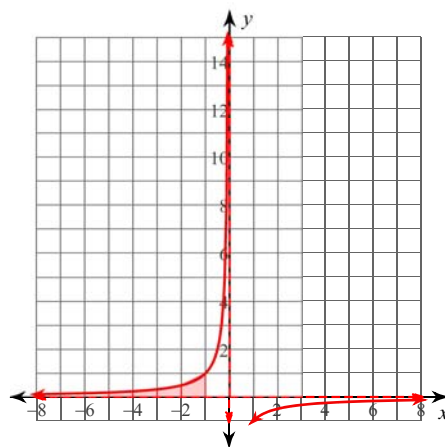
- A) $\frac{77}{20} \approx 3.85$
- *B) $\frac{67}{20} \approx 3.35$
- C) $\frac{87}{20} \approx 4.35$
- D) $\frac{181}{60} \approx 3.017$

7) $y = -\frac{2}{x}; [-4, -2]$



- A) $\frac{509}{840} \approx 0.606$
- B) $\frac{751}{840} \approx 0.894$
- C) $\frac{1171}{280} \approx 4.182$
- *D) $\frac{1171}{840} \approx 1.394$

8) $y = -\frac{1}{x}; [-5, -1]$



- *A) $\frac{101}{60} \approx 1.683$
- B) $\frac{101}{30} \approx 3.367$
- C) $\frac{121}{60} \approx 2.017$
- D) $\frac{161}{60} \approx 2.683$