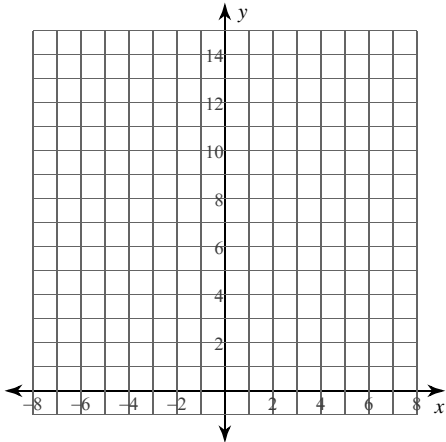


Calculus Practice: Riemann Sums 1a

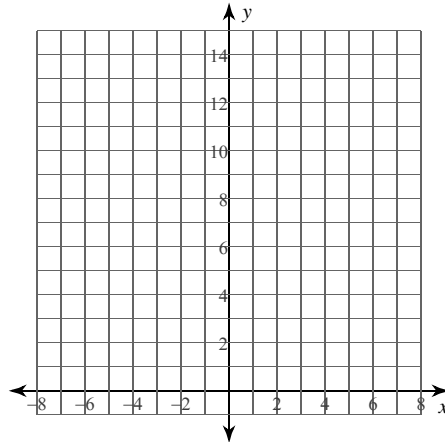
For each problem, approximate the area under the curve over the given interval using 4 left endpoint rectangles. You may use the provided graph to sketch the curve and rectangles.

1) $y = x + 6; [1, 3]$



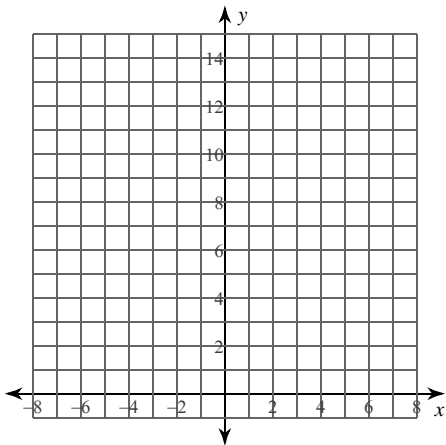
- A) 16 B) $\frac{29}{2} = 14.5$
 C) $\frac{93}{2} = 46.5$ D) $\frac{31}{2} = 15.5$

2) $y = -x + 5; [-7, 1]$



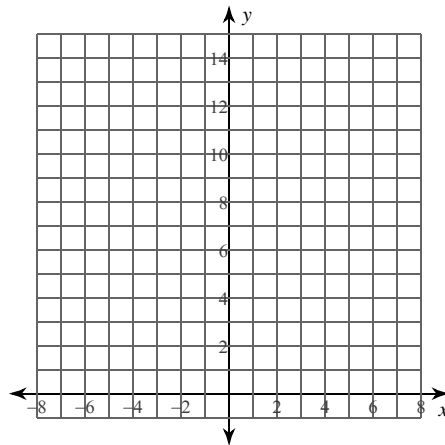
- A) 74 B) $\frac{143}{2} = 71.5$
 C) 72 D) 73

3) $y = -x^2 + 2x + 10; [-2, 2]$



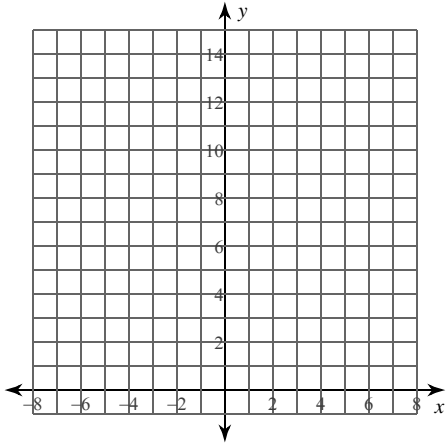
- A) 30 B) $\frac{61}{2} = 30.5$
 C) 28 D) $\frac{59}{2} = 29.5$

4) $y = x^2 - 2x + 3; [-2, 0]$



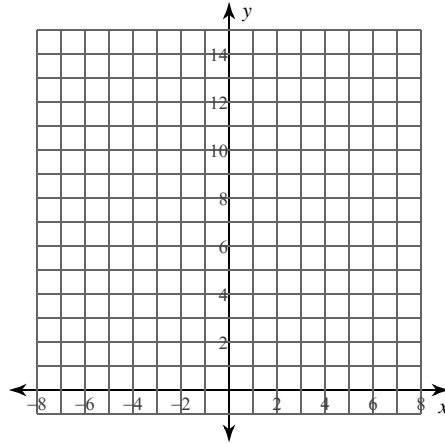
- A) $\frac{51}{4} = 12.75$
 B) $\frac{173}{12} \approx 14.417$
 C) $\frac{59}{4} = 14.75$
 D) $\frac{63}{4} = 15.75$

5) $y = \frac{x^2}{2} - x + 1; [2, 4]$



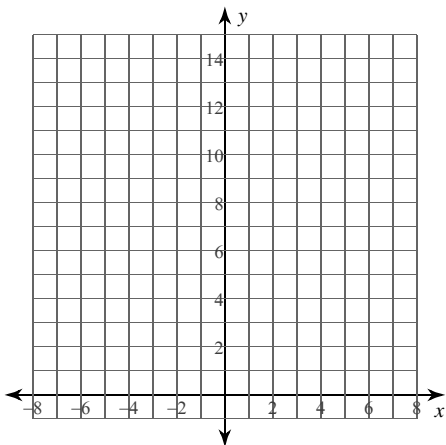
- A) $\frac{35}{8} = 4.375$ B) $\frac{27}{8} = 3.375$
 C) $\frac{43}{8} = 5.375$ D) $\frac{19}{8} = 2.375$

6) $y = -\frac{2}{x}; [-4, -2]$



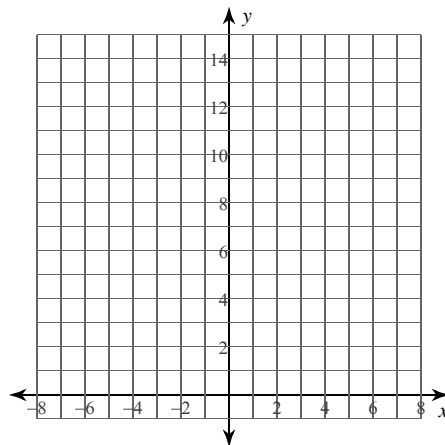
- A) $\frac{307}{420} \approx 0.731$
 B) $\frac{673}{420} \approx 1.602$
 C) $\frac{131}{140} \approx 0.936$
 D) $\frac{533}{420} \approx 1.269$

7) $y = \frac{3}{x}; [2, 4]$



- A) $\frac{39}{140} \approx 0.279$
 B) $\frac{599}{140} \approx 4.279$
 C) $\frac{817}{420} \approx 1.945$
 D) $\frac{319}{140} \approx 2.279$

8) $y = \frac{5}{x}; [2, 4]$

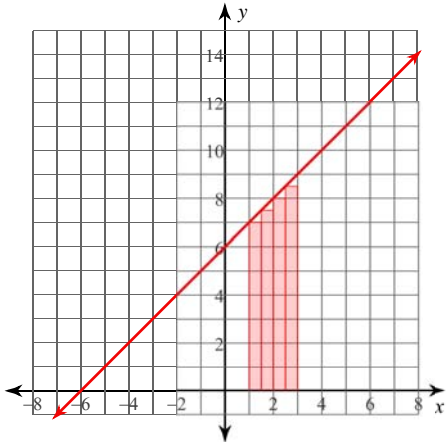


- A) $\frac{97}{28} \approx 3.464$
 B) $\frac{319}{42} \approx 7.595$
 C) $\frac{319}{84} \approx 3.798$
 D) $\frac{361}{84} \approx 4.298$

Calculus Practice: Riemann Sums 1a

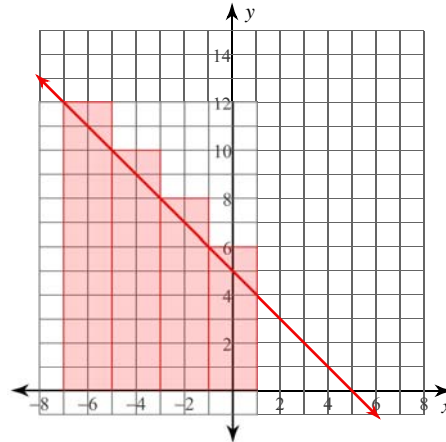
For each problem, approximate the area under the curve over the given interval using 4 left endpoint rectangles. You may use the provided graph to sketch the curve and rectangles.

1) $y = x + 6$; $[1, 3]$



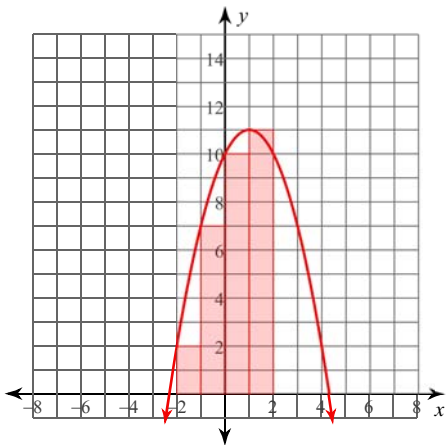
- A) 16 B) $\frac{29}{2} = 14.5$
 C) $\frac{93}{2} = 46.5$ *D) $\frac{31}{2} = 15.5$

2) $y = -x + 5$; $[-7, 1]$



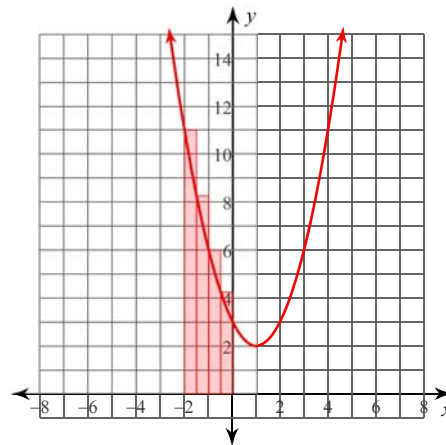
- A) 74 B) $\frac{143}{2} = 71.5$
 *C) 72 D) 73

3) $y = -x^2 + 2x + 10$; $[-2, 2]$



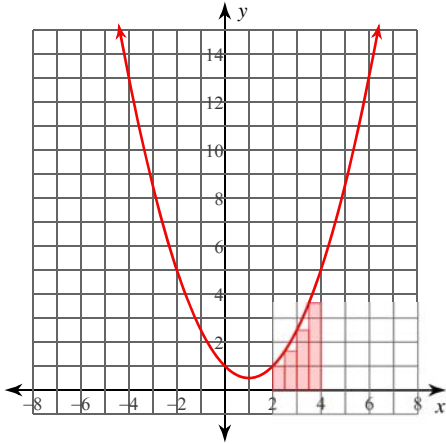
- *A) 30 B) $\frac{61}{2} = 30.5$
 C) 28 D) $\frac{59}{2} = 29.5$

4) $y = x^2 - 2x + 3$; $[-2, 0]$



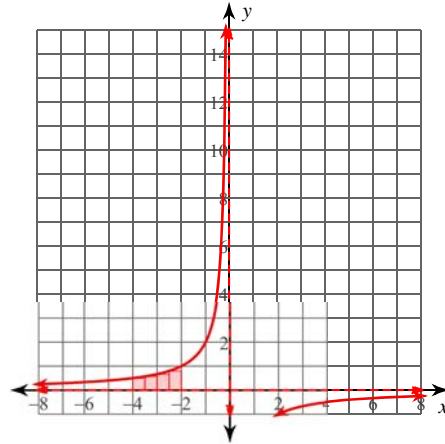
- A) $\frac{51}{4} = 12.75$
 B) $\frac{173}{12} \approx 14.417$
 *C) $\frac{59}{4} = 14.75$
 D) $\frac{63}{4} = 15.75$

5) $y = \frac{x^2}{2} - x + 1; [2, 4]$



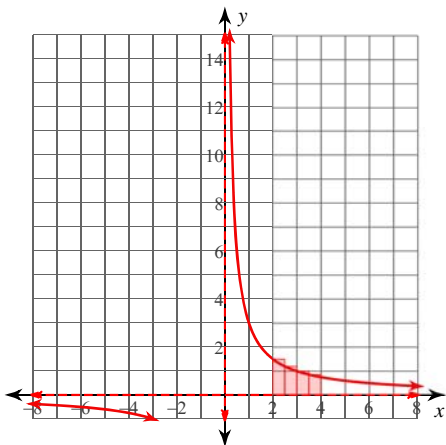
- *A) $\frac{35}{8} = 4.375$ B) $\frac{27}{8} = 3.375$
 C) $\frac{43}{8} = 5.375$ D) $\frac{19}{8} = 2.375$

6) $y = -\frac{2}{x}; [-4, -2]$



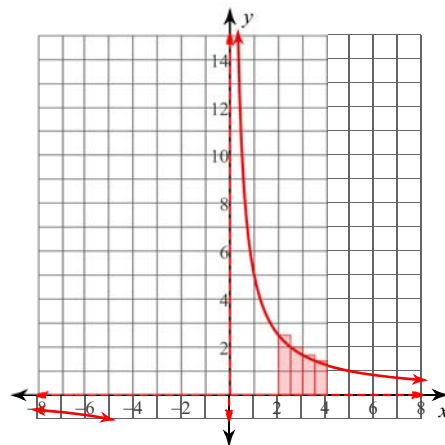
- A) $\frac{307}{420} \approx 0.731$
 B) $\frac{673}{420} \approx 1.602$
 C) $\frac{131}{140} \approx 0.936$
 *D) $\frac{533}{420} \approx 1.269$

7) $y = \frac{3}{x}; [2, 4]$



- A) $\frac{39}{140} \approx 0.279$
 B) $\frac{599}{140} \approx 4.279$
 C) $\frac{817}{420} \approx 1.945$
 *D) $\frac{319}{140} \approx 2.279$

8) $y = \frac{5}{x}; [2, 4]$



- A) $\frac{97}{28} \approx 3.464$
 B) $\frac{319}{42} \approx 7.595$
 *C) $\frac{319}{84} \approx 3.798$
 D) $\frac{361}{84} \approx 4.298$