

H – Quadratics, Lesson 6, Graphing Quadratic Functions (r. 2018)

QUADRATICS

Graphing Quadratic Functions

Common Core Standard	Next Generation Standard
<p>F-IF.B.4 For a function that models a relationship between two quantities, interpret key features of graphs and tables in terms of the quantities, and sketch graphs showing key features given a verbal description of the relationship. <i>Key features include: intercepts; intervals where the function is increasing, decreasing, positive, or negative; relative maximums and minimums; symmetries; end behavior; and periodicity.</i></p> <p>PARCC: Tasks have a real-world context. Tasks are limited to linear functions, quadratic functions, square root functions, cube root functions, piece-wise defined functions (including step functions and absolute value functions) and exponential functions with domains in the integers.</p>	<p>AI-F.IF.4 For a function that models a relationship between two quantities:</p> <p>i) interpret key features of graphs and tables in terms of the quantities; and</p> <p>ii) sketch graphs showing key features given a verbal description of the relationship.</p> <p>(Shared standard with Algebra II)</p> <p>Notes:</p> <ul style="list-style-type: none"> Algebra I key features include the following: intercepts, zeros; intervals where the function is increasing, decreasing, positive, or negative; maxima, minima; and symmetries. Tasks have a real-world context and are limited to the following functions: linear, quadratic, square root, piece-wise defined (including step and absolute value), and exponential functions of the form $f(x) = a(b)^x$ where $a > 0$ and $b > 0$ ($b \neq 1$).
<p>F-IF.C.7 Graph functions expressed symbolically and show key features of the graph, by hand in simple cases and using technology for more complicated cases.</p>	<p>AI-F.IF.7 Graph functions and show key features of the graph by hand and by using technology where appropriate.</p> <p>(Shared standard with Algebra II)</p>

LEARNING OBJECTIVES

Students will be able to:

- 1) Create a table of values from a function rule.
- 2) Sketch a graph from a table of values.
- 3) Identify and interpret in context key features of graphs, including: intercepts, zeros; intervals where the function is increasing, decreasing, positive, or negative; maxima, minima; and symmetries.

Overview of Lesson

Teacher Centered Introduction	Student Centered Activities
<p>Overview of Lesson</p> <ul style="list-style-type: none"> - activate students' prior knowledge - vocabulary - learning objective(s) - big ideas: direct instruction - modeling 	<p>guided practice ←Teacher: anticipates, monitors, selects, sequences, and connects student work</p> <ul style="list-style-type: none"> - developing essential skills - Regents exam questions - formative assessment assignment (exit slip, explain the math, or journal entry)

VOCABULARY

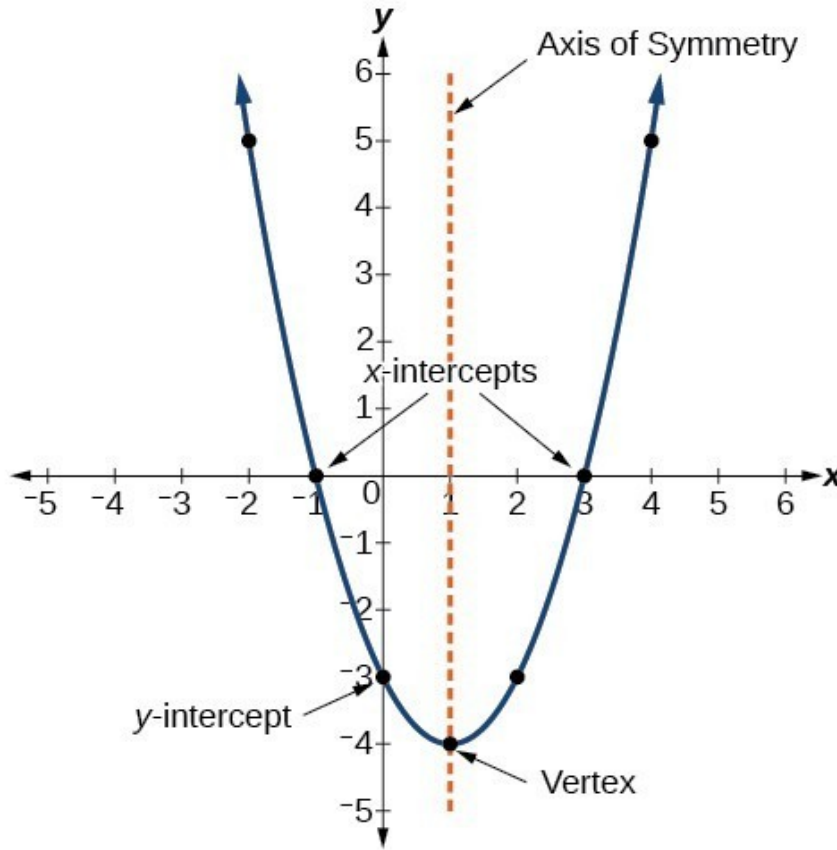
axis of symmetry
decreasing intervals
increasing intervals
intercepts
maxima

minima
negative slope
no slope
positive slope
symmetries

turning point
vertex
zeros

BIG IDEAS

Identify key features of graphs:



axis of symmetry: the axis of symmetry is the vertical line whose equation is $x = 1$

decreasing intervals: the function is decreasing over the interval $x < 0$

increasing intervals: the function is increasing over the interval $0 < x$

intercepts: the x-axis intercepts are -1 and 3, the y-axis intercept is -3

maxima: there is no maxima

minima: the minima is -4

negative slope: the slope is negative on the left side of the axis of symmetry

no slope: the function has no slope at the vertex (1,-4)

positive slope: the slope is positive on the right side of the axis of symmetry

symmetries: the graph left of the axis of symmetry is symmetrical to the graph right of the axis of symmetry

turning point: the turning point is (1,-4)

vertex: the vertex is at (1,-4)

zeros: the zeros are $x = \{-1, 3\}$, these are also the roots and solutions of the function.

Sketching Graphs of Quadrilaterals

STEP 1 Create a table of values.

- Use a graphing calculator whenever possible.
- Include the vertex in the table.

STEP 2 Select coordinate pairs that are easy to plot on a Cartesian plane.

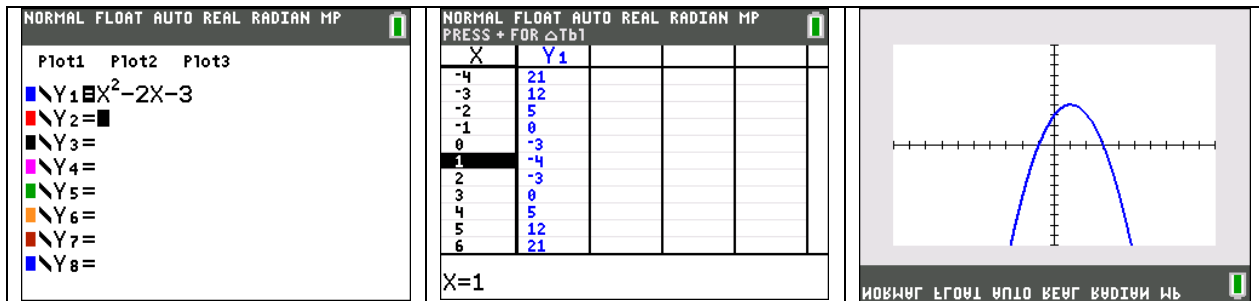
- Start with the vertex.
- Select integer values when possible.
- Select an equal number of points on either side of the vertex
- 5 coordinate pairs are usually enough.

STEP 3 Connect the plotted points.

- Use the graph view of the function as a model for your sketch.
- Label the graph.
 - Include the function rule and at least three coordinates of plot points, and/or
 - Show the function rule and construct a table of values of plotted points on the page with the graph.

Example

Use technology to show three views of the following function: $x^2 - 2x - 3$



DEVELOPING ESSENTIAL SKILLS

Sketch graphs of each of the following functions using technology and graph paper:

$x^2 - 10x + 21 = 0$
$(x - 1)^2 - 4 = 0$
$(x - 2)(x + 4) = 0$
$3(x - 5)(x - 3) = 0$
$x^2 + 4x - 5 = 0$

Answers

Note: Students may submit answers on graph paper.

$x^2 - 10x + 21 = 0$	<p>NORMAL FLOAT AUTO REAL RADIAN HP</p> <p>Plot1 Plot2 Plot3</p> <p>$Y_1 = X^2 - 10X + 21$</p> <p>$Y_2 =$</p> <p>$Y_3 =$</p> <p>$Y_4 =$</p> <p>$Y_5 =$</p> <p>$Y_6 =$</p> <p>$Y_7 =$</p> <p>$Y_8 =$</p>	<p>X=2</p> <table border="1"> <thead> <tr> <th>X</th> <th>Y1</th> </tr> </thead> <tbody> <tr><td>1</td><td>16</td></tr> <tr><td>2</td><td>9</td></tr> <tr><td>3</td><td>0</td></tr> <tr><td>4</td><td>-9</td></tr> <tr><td>5</td><td>-16</td></tr> <tr><td>6</td><td>-21</td></tr> <tr><td>7</td><td>-24</td></tr> <tr><td>8</td><td>-25</td></tr> <tr><td>9</td><td>-24</td></tr> <tr><td>10</td><td>-21</td></tr> <tr><td>11</td><td>-16</td></tr> <tr><td>12</td><td>-9</td></tr> <tr><td>13</td><td>0</td></tr> <tr><td>14</td><td>9</td></tr> <tr><td>15</td><td>16</td></tr> <tr><td>16</td><td>21</td></tr> </tbody> </table> <p>X=2</p>	X	Y1	1	16	2	9	3	0	4	-9	5	-16	6	-21	7	-24	8	-25	9	-24	10	-21	11	-16	12	-9	13	0	14	9	15	16	16	21	<p>NORMAL FLOAT AUTO REAL RADIAN HP</p>																																																																																																																																																																																								
X	Y1																																																																																																																																																																																																																												
1	16																																																																																																																																																																																																																												
2	9																																																																																																																																																																																																																												
3	0																																																																																																																																																																																																																												
4	-9																																																																																																																																																																																																																												
5	-16																																																																																																																																																																																																																												
6	-21																																																																																																																																																																																																																												
7	-24																																																																																																																																																																																																																												
8	-25																																																																																																																																																																																																																												
9	-24																																																																																																																																																																																																																												
10	-21																																																																																																																																																																																																																												
11	-16																																																																																																																																																																																																																												
12	-9																																																																																																																																																																																																																												
13	0																																																																																																																																																																																																																												
14	9																																																																																																																																																																																																																												
15	16																																																																																																																																																																																																																												
16	21																																																																																																																																																																																																																												
$(x-1)^2 - 4 = 0$	<p>NORMAL FLOAT AUTO REAL RADIAN HP</p> <p>Plot1 Plot2 Plot3</p> <p>$Y_1 = (X-1)^2 - 4$</p> <p>$Y_2 =$</p> <p>$Y_3 =$</p> <p>$Y_4 =$</p> <p>$Y_5 =$</p> <p>$Y_6 =$</p> <p>$Y_7 =$</p> <p>$Y_8 =$</p>	<p>NORMAL FLOAT AUTO REAL RADIAN HP</p> <p>PRESS + FOR ΔTbl</p> <table border="1"> <thead> <tr> <th>X</th> <th>Y1</th> </tr> </thead> <tbody> <tr><td>-1</td><td>0</td></tr> <tr><td>0</td><td>-3</td></tr> <tr><td>1</td><td>-4</td></tr> <tr><td>2</td><td>-3</td></tr> <tr><td>3</td><td>0</td></tr> <tr><td>4</td><td>3</td></tr> <tr><td>5</td><td>6</td></tr> <tr><td>6</td><td>9</td></tr> <tr><td>7</td><td>12</td></tr> <tr><td>8</td><td>15</td></tr> <tr><td>9</td><td>16</td></tr> <tr><td>10</td><td>15</td></tr> <tr><td>11</td><td>12</td></tr> <tr><td>12</td><td>9</td></tr> <tr><td>13</td><td>6</td></tr> <tr><td>14</td><td>3</td></tr> <tr><td>15</td><td>0</td></tr> <tr><td>16</td><td>-3</td></tr> <tr><td>17</td><td>-6</td></tr> <tr><td>18</td><td>-9</td></tr> <tr><td>19</td><td>-12</td></tr> <tr><td>20</td><td>-15</td></tr> <tr><td>21</td><td>-16</td></tr> <tr><td>22</td><td>-15</td></tr> <tr><td>23</td><td>-12</td></tr> <tr><td>24</td><td>-9</td></tr> <tr><td>25</td><td>-6</td></tr> <tr><td>26</td><td>-3</td></tr> <tr><td>27</td><td>0</td></tr> <tr><td>28</td><td>3</td></tr> <tr><td>29</td><td>6</td></tr> <tr><td>30</td><td>9</td></tr> <tr><td>31</td><td>12</td></tr> <tr><td>32</td><td>15</td></tr> <tr><td>33</td><td>16</td></tr> <tr><td>34</td><td>15</td></tr> <tr><td>35</td><td>12</td></tr> <tr><td>36</td><td>9</td></tr> <tr><td>37</td><td>6</td></tr> <tr><td>38</td><td>3</td></tr> <tr><td>39</td><td>0</td></tr> <tr><td>40</td><td>-3</td></tr> <tr><td>41</td><td>-6</td></tr> <tr><td>42</td><td>-9</td></tr> <tr><td>43</td><td>-12</td></tr> <tr><td>44</td><td>-15</td></tr> <tr><td>45</td><td>-16</td></tr> <tr><td>46</td><td>-15</td></tr> <tr><td>47</td><td>-12</td></tr> <tr><td>48</td><td>-9</td></tr> <tr><td>49</td><td>-6</td></tr> <tr><td>50</td><td>-3</td></tr> </tbody> </table> <p>X=1</p>	X	Y1	-1	0	0	-3	1	-4	2	-3	3	0	4	3	5	6	6	9	7	12	8	15	9	16	10	15	11	12	12	9	13	6	14	3	15	0	16	-3	17	-6	18	-9	19	-12	20	-15	21	-16	22	-15	23	-12	24	-9	25	-6	26	-3	27	0	28	3	29	6	30	9	31	12	32	15	33	16	34	15	35	12	36	9	37	6	38	3	39	0	40	-3	41	-6	42	-9	43	-12	44	-15	45	-16	46	-15	47	-12	48	-9	49	-6	50	-3	<p>NORMAL FLOAT AUTO REAL RADIAN HP</p>																																																																																																																
X	Y1																																																																																																																																																																																																																												
-1	0																																																																																																																																																																																																																												
0	-3																																																																																																																																																																																																																												
1	-4																																																																																																																																																																																																																												
2	-3																																																																																																																																																																																																																												
3	0																																																																																																																																																																																																																												
4	3																																																																																																																																																																																																																												
5	6																																																																																																																																																																																																																												
6	9																																																																																																																																																																																																																												
7	12																																																																																																																																																																																																																												
8	15																																																																																																																																																																																																																												
9	16																																																																																																																																																																																																																												
10	15																																																																																																																																																																																																																												
11	12																																																																																																																																																																																																																												
12	9																																																																																																																																																																																																																												
13	6																																																																																																																																																																																																																												
14	3																																																																																																																																																																																																																												
15	0																																																																																																																																																																																																																												
16	-3																																																																																																																																																																																																																												
17	-6																																																																																																																																																																																																																												
18	-9																																																																																																																																																																																																																												
19	-12																																																																																																																																																																																																																												
20	-15																																																																																																																																																																																																																												
21	-16																																																																																																																																																																																																																												
22	-15																																																																																																																																																																																																																												
23	-12																																																																																																																																																																																																																												
24	-9																																																																																																																																																																																																																												
25	-6																																																																																																																																																																																																																												
26	-3																																																																																																																																																																																																																												
27	0																																																																																																																																																																																																																												
28	3																																																																																																																																																																																																																												
29	6																																																																																																																																																																																																																												
30	9																																																																																																																																																																																																																												
31	12																																																																																																																																																																																																																												
32	15																																																																																																																																																																																																																												
33	16																																																																																																																																																																																																																												
34	15																																																																																																																																																																																																																												
35	12																																																																																																																																																																																																																												
36	9																																																																																																																																																																																																																												
37	6																																																																																																																																																																																																																												
38	3																																																																																																																																																																																																																												
39	0																																																																																																																																																																																																																												
40	-3																																																																																																																																																																																																																												
41	-6																																																																																																																																																																																																																												
42	-9																																																																																																																																																																																																																												
43	-12																																																																																																																																																																																																																												
44	-15																																																																																																																																																																																																																												
45	-16																																																																																																																																																																																																																												
46	-15																																																																																																																																																																																																																												
47	-12																																																																																																																																																																																																																												
48	-9																																																																																																																																																																																																																												
49	-6																																																																																																																																																																																																																												
50	-3																																																																																																																																																																																																																												
$(x-2)(x+4) = 0$	<p>NORMAL FLOAT AUTO REAL RADIAN HP</p> <p>Plot1 Plot2 Plot3</p> <p>$Y_1 = (X-2)(X+4)$</p> <p>$Y_2 =$</p> <p>$Y_3 =$</p> <p>$Y_4 =$</p> <p>$Y_5 =$</p> <p>$Y_6 =$</p> <p>$Y_7 =$</p> <p>$Y_8 =$</p> <p>$Y_9 =$</p>	<p>NORMAL FLOAT AUTO REAL RADIAN HP</p> <p>X=-7</p> <table border="1"> <thead> <tr> <th>X</th> <th>Y1</th> </tr> </thead> <tbody> <tr><td>-7</td><td>10</td></tr> <tr><td>-6</td><td>8</td></tr> <tr><td>-5</td><td>6</td></tr> <tr><td>-4</td><td>4</td></tr> <tr><td>-3</td><td>2</td></tr> <tr><td>-2</td><td>0</td></tr> <tr><td>-1</td><td>-2</td></tr> <tr><td>0</td><td>-4</td></tr> <tr><td>1</td><td>-6</td></tr> <tr><td>2</td><td>-8</td></tr> <tr><td>3</td><td>-10</td></tr> <tr><td>4</td><td>-12</td></tr> <tr><td>5</td><td>-14</td></tr> <tr><td>6</td><td>-16</td></tr> <tr><td>7</td><td>-16</td></tr> <tr><td>8</td><td>-14</td></tr> <tr><td>9</td><td>-12</td></tr> <tr><td>10</td><td>-10</td></tr> <tr><td>11</td><td>-8</td></tr> <tr><td>12</td><td>-6</td></tr> <tr><td>13</td><td>-4</td></tr> <tr><td>14</td><td>-2</td></tr> <tr><td>15</td><td>0</td></tr> <tr><td>16</td><td>2</td></tr> <tr><td>17</td><td>4</td></tr> <tr><td>18</td><td>6</td></tr> <tr><td>19</td><td>8</td></tr> <tr><td>20</td><td>10</td></tr> <tr><td>21</td><td>12</td></tr> <tr><td>22</td><td>14</td></tr> <tr><td>23</td><td>16</td></tr> <tr><td>24</td><td>16</td></tr> <tr><td>25</td><td>14</td></tr> <tr><td>26</td><td>12</td></tr> <tr><td>27</td><td>10</td></tr> <tr><td>28</td><td>8</td></tr> <tr><td>29</td><td>6</td></tr> <tr><td>30</td><td>4</td></tr> <tr><td>31</td><td>2</td></tr> <tr><td>32</td><td>0</td></tr> <tr><td>33</td><td>-2</td></tr> <tr><td>34</td><td>-4</td></tr> <tr><td>35</td><td>-6</td></tr> <tr><td>36</td><td>-8</td></tr> <tr><td>37</td><td>-10</td></tr> <tr><td>38</td><td>-12</td></tr> <tr><td>39</td><td>-14</td></tr> <tr><td>40</td><td>-16</td></tr> <tr><td>41</td><td>-16</td></tr> <tr><td>42</td><td>-14</td></tr> <tr><td>43</td><td>-12</td></tr> <tr><td>44</td><td>-10</td></tr> <tr><td>45</td><td>-8</td></tr> <tr><td>46</td><td>-6</td></tr> <tr><td>47</td><td>-4</td></tr> <tr><td>48</td><td>-2</td></tr> <tr><td>49</td><td>0</td></tr> <tr><td>50</td><td>2</td></tr> <tr><td>51</td><td>4</td></tr> <tr><td>52</td><td>6</td></tr> <tr><td>53</td><td>8</td></tr> <tr><td>54</td><td>10</td></tr> <tr><td>55</td><td>12</td></tr> <tr><td>56</td><td>14</td></tr> <tr><td>57</td><td>16</td></tr> <tr><td>58</td><td>16</td></tr> <tr><td>59</td><td>14</td></tr> <tr><td>60</td><td>12</td></tr> <tr><td>61</td><td>10</td></tr> <tr><td>62</td><td>8</td></tr> <tr><td>63</td><td>6</td></tr> <tr><td>64</td><td>4</td></tr> <tr><td>65</td><td>2</td></tr> <tr><td>66</td><td>0</td></tr> <tr><td>67</td><td>-2</td></tr> <tr><td>68</td><td>-4</td></tr> <tr><td>69</td><td>-6</td></tr> <tr><td>70</td><td>-8</td></tr> <tr><td>71</td><td>-10</td></tr> <tr><td>72</td><td>-12</td></tr> <tr><td>73</td><td>-14</td></tr> <tr><td>74</td><td>-16</td></tr> <tr><td>75</td><td>-16</td></tr> <tr><td>76</td><td>-14</td></tr> <tr><td>77</td><td>-12</td></tr> <tr><td>78</td><td>-10</td></tr> <tr><td>79</td><td>-8</td></tr> <tr><td>80</td><td>-6</td></tr> <tr><td>81</td><td>-4</td></tr> <tr><td>82</td><td>-2</td></tr> <tr><td>83</td><td>0</td></tr> <tr><td>84</td><td>2</td></tr> <tr><td>85</td><td>4</td></tr> <tr><td>86</td><td>6</td></tr> <tr><td>87</td><td>8</td></tr> <tr><td>88</td><td>10</td></tr> <tr><td>89</td><td>12</td></tr> <tr><td>90</td><td>14</td></tr> <tr><td>91</td><td>16</td></tr> <tr><td>92</td><td>16</td></tr> <tr><td>93</td><td>14</td></tr> <tr><td>94</td><td>12</td></tr> <tr><td>95</td><td>10</td></tr> <tr><td>96</td><td>8</td></tr> <tr><td>97</td><td>6</td></tr> <tr><td>98</td><td>4</td></tr> <tr><td>99</td><td>2</td></tr> <tr><td>100</td><td>0</td></tr> </tbody> </table> <p>X=-7</p>	X	Y1	-7	10	-6	8	-5	6	-4	4	-3	2	-2	0	-1	-2	0	-4	1	-6	2	-8	3	-10	4	-12	5	-14	6	-16	7	-16	8	-14	9	-12	10	-10	11	-8	12	-6	13	-4	14	-2	15	0	16	2	17	4	18	6	19	8	20	10	21	12	22	14	23	16	24	16	25	14	26	12	27	10	28	8	29	6	30	4	31	2	32	0	33	-2	34	-4	35	-6	36	-8	37	-10	38	-12	39	-14	40	-16	41	-16	42	-14	43	-12	44	-10	45	-8	46	-6	47	-4	48	-2	49	0	50	2	51	4	52	6	53	8	54	10	55	12	56	14	57	16	58	16	59	14	60	12	61	10	62	8	63	6	64	4	65	2	66	0	67	-2	68	-4	69	-6	70	-8	71	-10	72	-12	73	-14	74	-16	75	-16	76	-14	77	-12	78	-10	79	-8	80	-6	81	-4	82	-2	83	0	84	2	85	4	86	6	87	8	88	10	89	12	90	14	91	16	92	16	93	14	94	12	95	10	96	8	97	6	98	4	99	2	100	0	<p>NORMAL FLOAT AUTO REAL RADIAN HP</p>
X	Y1																																																																																																																																																																																																																												
-7	10																																																																																																																																																																																																																												
-6	8																																																																																																																																																																																																																												
-5	6																																																																																																																																																																																																																												
-4	4																																																																																																																																																																																																																												
-3	2																																																																																																																																																																																																																												
-2	0																																																																																																																																																																																																																												
-1	-2																																																																																																																																																																																																																												
0	-4																																																																																																																																																																																																																												
1	-6																																																																																																																																																																																																																												
2	-8																																																																																																																																																																																																																												
3	-10																																																																																																																																																																																																																												
4	-12																																																																																																																																																																																																																												
5	-14																																																																																																																																																																																																																												
6	-16																																																																																																																																																																																																																												
7	-16																																																																																																																																																																																																																												
8	-14																																																																																																																																																																																																																												
9	-12																																																																																																																																																																																																																												
10	-10																																																																																																																																																																																																																												
11	-8																																																																																																																																																																																																																												
12	-6																																																																																																																																																																																																																												
13	-4																																																																																																																																																																																																																												
14	-2																																																																																																																																																																																																																												
15	0																																																																																																																																																																																																																												
16	2																																																																																																																																																																																																																												
17	4																																																																																																																																																																																																																												
18	6																																																																																																																																																																																																																												
19	8																																																																																																																																																																																																																												
20	10																																																																																																																																																																																																																												
21	12																																																																																																																																																																																																																												
22	14																																																																																																																																																																																																																												
23	16																																																																																																																																																																																																																												
24	16																																																																																																																																																																																																																												
25	14																																																																																																																																																																																																																												
26	12																																																																																																																																																																																																																												
27	10																																																																																																																																																																																																																												
28	8																																																																																																																																																																																																																												
29	6																																																																																																																																																																																																																												
30	4																																																																																																																																																																																																																												
31	2																																																																																																																																																																																																																												
32	0																																																																																																																																																																																																																												
33	-2																																																																																																																																																																																																																												
34	-4																																																																																																																																																																																																																												
35	-6																																																																																																																																																																																																																												
36	-8																																																																																																																																																																																																																												
37	-10																																																																																																																																																																																																																												
38	-12																																																																																																																																																																																																																												
39	-14																																																																																																																																																																																																																												
40	-16																																																																																																																																																																																																																												
41	-16																																																																																																																																																																																																																												
42	-14																																																																																																																																																																																																																												
43	-12																																																																																																																																																																																																																												
44	-10																																																																																																																																																																																																																												
45	-8																																																																																																																																																																																																																												
46	-6																																																																																																																																																																																																																												
47	-4																																																																																																																																																																																																																												
48	-2																																																																																																																																																																																																																												
49	0																																																																																																																																																																																																																												
50	2																																																																																																																																																																																																																												
51	4																																																																																																																																																																																																																												
52	6																																																																																																																																																																																																																												
53	8																																																																																																																																																																																																																												
54	10																																																																																																																																																																																																																												
55	12																																																																																																																																																																																																																												
56	14																																																																																																																																																																																																																												
57	16																																																																																																																																																																																																																												
58	16																																																																																																																																																																																																																												
59	14																																																																																																																																																																																																																												
60	12																																																																																																																																																																																																																												
61	10																																																																																																																																																																																																																												
62	8																																																																																																																																																																																																																												
63	6																																																																																																																																																																																																																												
64	4																																																																																																																																																																																																																												
65	2																																																																																																																																																																																																																												
66	0																																																																																																																																																																																																																												
67	-2																																																																																																																																																																																																																												
68	-4																																																																																																																																																																																																																												
69	-6																																																																																																																																																																																																																												
70	-8																																																																																																																																																																																																																												
71	-10																																																																																																																																																																																																																												
72	-12																																																																																																																																																																																																																												
73	-14																																																																																																																																																																																																																												
74	-16																																																																																																																																																																																																																												
75	-16																																																																																																																																																																																																																												
76	-14																																																																																																																																																																																																																												
77	-12																																																																																																																																																																																																																												
78	-10																																																																																																																																																																																																																												
79	-8																																																																																																																																																																																																																												
80	-6																																																																																																																																																																																																																												
81	-4																																																																																																																																																																																																																												
82	-2																																																																																																																																																																																																																												
83	0																																																																																																																																																																																																																												
84	2																																																																																																																																																																																																																												
85	4																																																																																																																																																																																																																												
86	6																																																																																																																																																																																																																												
87	8																																																																																																																																																																																																																												
88	10																																																																																																																																																																																																																												
89	12																																																																																																																																																																																																																												
90	14																																																																																																																																																																																																																												
91	16																																																																																																																																																																																																																												
92	16																																																																																																																																																																																																																												
93	14																																																																																																																																																																																																																												
94	12																																																																																																																																																																																																																												
95	10																																																																																																																																																																																																																												
96	8																																																																																																																																																																																																																												
97	6																																																																																																																																																																																																																												
98	4																																																																																																																																																																																																																												
99	2																																																																																																																																																																																																																												
100	0																																																																																																																																																																																																																												
$3(x-5)(x-3) = 0$	<p>NORMAL FLOAT AUTO REAL RADIAN HP</p> <p>Plot1 Plot2 Plot3</p> <p>$Y_1 = 3(X-5)(X-3)$</p> <p>$Y_2 =$</p> <p>$Y_3 =$</p> <p>$Y_4 =$</p> <p>$Y_5 =$</p> <p>$Y_6 =$</p> <p>$Y_7 =$</p> <p>$Y_8 =$</p> <p>$Y_9 =$</p>	<p>NORMAL FLOAT AUTO REAL RADIAN HP</p> <p>PRESS + FOR ΔTbl</p> <table border="1"> <thead> <tr> <th>X</th> <th>Y1</th> </tr> </thead> <tbody> <tr><td>-1</td><td>72</td></tr> <tr><td>0</td><td>45</td></tr> <tr><td>1</td><td>24</td></tr> <tr><td>2</td><td>9</td></tr> <tr><td>3</td><td>0</td></tr> <tr><td>4</td><td>-9</td></tr> <tr><td>5</td><td>-24</td></tr> <tr><td>6</td><td>-45</td></tr> <tr><td>7</td><td>-72</td></tr> <tr><td>8</td><td>-105</td></tr> <tr><td>9</td><td>-144</td></tr> <tr><td>10</td><td>-189</td></tr> <tr><td>11</td><td>-240</td></tr> <tr><td>12</td><td>-297</td></tr> <tr><td>13</td><td>-360</td></tr> <tr><td>14</td><td>-429</td></tr> <tr><td>15</td><td>-504</td></tr> <tr><td>16</td><td>-585</td></tr> <tr><td>17</td><td>-672</td></tr> <tr><td>18</td><td>-765</td></tr> <tr><td>19</td><td>-864</td></tr> <tr><td>20</td><td>-969</td></tr> <tr><td>21</td><td>-1080</td></tr> <tr><td>22</td><td>-1197</td></tr> <tr><td>23</td><td>-1320</td></tr> <tr><td>24</td><td>-1459</td></tr> <tr><td>25</td><td>-1604</td></tr> <tr><td>26</td><td>-1765</td></tr> <tr><td>27</td><td>-1932</td></tr> <tr><td>28</td><td>-2106</td></tr> <tr><td>29</td><td>-2287</td></tr> <tr><td>30</td><td>-2475</td></tr> <tr><td>31</td><td>-2670</td></tr> <tr><td>32</td><td>-2872</td></tr> <tr><td>33</td><td>-3081</td></tr> <tr><td>34</td><td>-3297</td></tr> <tr><td>35</td><td>-3520</td></tr> <tr><td>36</td><td>-3750</td></tr> <tr><td>37</td><td>-3987</td></tr> <tr><td>38</td><td>-4232</td></tr> <tr><td>39</td><td>-4485</td></tr> <tr><td>40</td><td>-4746</td></tr> <tr><td>41</td><td>-5016</td></tr> <tr><td>42</td><td>-5294</td></tr> <tr><td>43</td><td>-5580</td></tr> <tr><td>44</td><td>-5875</td></tr> <tr><td>45</td><td>-6179</td></tr> <tr><td>46</td><td>-6492</td></tr> <tr><td>47</td><td>-6814</td></tr> <tr><td>48</td><td>-7145</td></tr> <tr><td>49</td><td>-7485</td></tr> <tr><td>50</td><td>-7834</td></tr> <tr><td>51</td><td>-8193</td></tr> <tr><td>52</td><td>-8561</td></tr> <tr><td>53</td><td>-8938</td></tr> <tr><td>54</td><td>-9325</td></tr> <tr><td>55</td><td>-9722</td></tr> <tr><td>56</td><td>-10129</td></tr> <tr><td>57</td><td>-10546</td></tr> <tr><td>58</td><td>-10973</td></tr> <tr><td>59</td><td>-11410</td></tr> <tr><td>60</td><td>-11857</td></tr> <tr><td>61</td><td>-12314</td></tr> <tr><td>62</td><td>-12781</td></tr> <tr><td>63</td><td>-13258</td></tr> <tr><td>64</td><td>-13745</td></tr> <tr><td>65</td><td>-14242</td></tr> <tr><td>66</td><td>-14749</td></tr> <tr><td>67</td><td>-15266</td></tr> <tr><td>68</td><td>-15793</td></tr> <tr><td>69</td><td>-16330</td></tr> <tr><td>70</td><td>-16877</td></tr> <tr><td>71</td><td>-17434</td></tr> <tr><td>72</td><td>-18001</td></tr> <tr><td>73</td><td>-18578</td></tr> <tr><td>74</td><td>-19165</td></tr> <tr><td>75</td><td>-19762</td></tr> <tr><td>76</td><td>-20369</td></tr> <tr><td>77</td><td>-20986</td></tr> <tr><td>78</td><td>-21613</td></tr> <tr><td>79</td><td>-22250</td></tr> <tr><td>80</td><td>-22897</td></tr> <tr><td>81</td><td>-23554</td></tr> <tr><td>82</td><td>-24221</td></tr> <tr><td>83</td><td>-24898</td></tr> <tr><td>84</td><td>-25585</td></tr> <tr><td>85</td><td>-26282</td></tr> <tr><td>86</td><td>-26989</td></tr> <tr><td>87</td><td>-27706</td></tr> <tr><td>88</td><td>-28433</td></tr> <tr><td>89</td><td>-29170</td></tr> <tr><td>90</td><td>-29917</td></tr> <tr><td>91</td><td>-30674</td></tr> <tr><td>92</td><td>-31441</td></tr> <tr><td>93</td><td>-32218</td></tr> <tr><td>94</td><td>-33005</td></tr> <tr><td>95</td><td>-33802</td></tr> <tr><td>96</td><td>-34609</td></tr> <tr><td>97</td><td>-35426</td></tr> <tr><td>98</td><td>-36253</td></tr> <tr><td>99</td><td>-37090</td></tr> <tr><td>100</td><td>-37937</td></tr> </tbody> </table> <p>X=4</p>	X	Y1	-1	72	0	45	1	24	2	9	3	0	4	-9	5	-24	6	-45	7	-72	8	-105	9	-144	10	-189	11	-240	12	-297	13	-360	14	-429	15	-504	16	-585	17	-672	18	-765	19	-864	20	-969	21	-1080	22	-1197	23	-1320	24	-1459	25	-1604	26	-1765	27	-1932	28	-2106	29	-2287	30	-2475	31	-2670	32	-2872	33	-3081	34	-3297	35	-3520	36	-3750	37	-3987	38	-4232	39	-4485	40	-4746	41	-5016	42	-5294	43	-5580	44	-5875	45	-6179	46	-6492	47	-6814	48	-7145	49	-7485	50	-7834	51	-8193	52	-8561	53	-8938	54	-9325	55	-9722	56	-10129	57	-10546	58	-10973	59	-11410	60	-11857	61	-12314	62	-12781	63	-13258	64	-13745	65	-14242	66	-14749	67	-15266	68	-15793	69	-16330	70	-16877	71	-17434	72	-18001	73	-18578	74	-19165	75	-19762	76	-20369	77	-20986	78	-21613	79	-22250	80	-22897	81	-23554	82	-24221	83	-24898	84	-25585	85	-26282	86	-26989	87	-27706	88	-28433	89	-29170	90	-29917	91	-30674	92	-31441	93	-32218	94	-33005	95	-33802	96	-34609	97	-35426	98	-36253	99	-37090	100	-37937	<p>NORMAL FLOAT AUTO REAL RADIAN HP</p>												
X	Y1																																																																																																																																																																																																																												
-1	72																																																																																																																																																																																																																												
0	45																																																																																																																																																																																																																												
1	24																																																																																																																																																																																																																												
2	9																																																																																																																																																																																																																												
3	0																																																																																																																																																																																																																												
4	-9																																																																																																																																																																																																																												
5	-24																																																																																																																																																																																																																												
6	-45																																																																																																																																																																																																																												
7	-72																																																																																																																																																																																																																												
8	-105																																																																																																																																																																																																																												
9	-144																																																																																																																																																																																																																												
10	-189																																																																																																																																																																																																																												
11	-240																																																																																																																																																																																																																												
12	-297																																																																																																																																																																																																																												
13	-360																																																																																																																																																																																																																												
14	-429																																																																																																																																																																																																																												
15	-504																																																																																																																																																																																																																												
16	-585																																																																																																																																																																																																																												
17	-672																																																																																																																																																																																																																												
18	-765																																																																																																																																																																																																																												
19	-864																																																																																																																																																																																																																												
20	-969																																																																																																																																																																																																																												
21	-1080																																																																																																																																																																																																																												
22	-1197																																																																																																																																																																																																																												
23	-1320																																																																																																																																																																																																																												
24	-1459																																																																																																																																																																																																																												
25	-1604																																																																																																																																																																																																																												
26	-1765																																																																																																																																																																																																																												
27	-1932																																																																																																																																																																																																																												
28	-2106																																																																																																																																																																																																																												
29	-2287																																																																																																																																																																																																																												
30	-2475																																																																																																																																																																																																																												
31	-2670																																																																																																																																																																																																																												
32	-2872																																																																																																																																																																																																																												
33	-3081																																																																																																																																																																																																																												
34	-3297																																																																																																																																																																																																																												
35	-3520																																																																																																																																																																																																																												
36	-3750																																																																																																																																																																																																																												
37	-3987																																																																																																																																																																																																																												
38	-4232																																																																																																																																																																																																																												
39	-4485																																																																																																																																																																																																																												
40	-4746																																																																																																																																																																																																																												
41	-5016																																																																																																																																																																																																																												
42	-5294																																																																																																																																																																																																																												
43	-5580																																																																																																																																																																																																																												
44	-5875																																																																																																																																																																																																																												
45	-6179																																																																																																																																																																																																																												
46	-6492																																																																																																																																																																																																																												
47	-6814																																																																																																																																																																																																																												
48	-7145																																																																																																																																																																																																																												
49	-7485																																																																																																																																																																																																																												
50	-7834																																																																																																																																																																																																																												
51	-8193																																																																																																																																																																																																																												
52	-8561																																																																																																																																																																																																																												
53	-8938																																																																																																																																																																																																																												
54	-9325																																																																																																																																																																																																																												
55	-9722																																																																																																																																																																																																																												
56	-10129																																																																																																																																																																																																																												
57	-10546																																																																																																																																																																																																																												
58	-10973																																																																																																																																																																																																																												
59	-11410																																																																																																																																																																																																																												
60	-11857																																																																																																																																																																																																																												
61	-12314																																																																																																																																																																																																																												
62	-12781																																																																																																																																																																																																																												
63	-13258																																																																																																																																																																																																																												
64	-13745																																																																																																																																																																																																																												
65	-14242																																																																																																																																																																																																																												
66	-14749																																																																																																																																																																																																																												
67	-15266																																																																																																																																																																																																																												
68	-15793																																																																																																																																																																																																																												
69	-16330																																																																																																																																																																																																																												
70	-16877																																																																																																																																																																																																																												
71	-17434																																																																																																																																																																																																																												
72	-18001																																																																																																																																																																																																																												
73	-18578																																																																																																																																																																																																																												
74	-19165																																																																																																																																																																																																																												
75	-19762																																																																																																																																																																																																																												
76	-20369																																																																																																																																																																																																																												
77	-20986																																																																																																																																																																																																																												
78	-21613																																																																																																																																																																																																																												
79	-22250																																																																																																																																																																																																																												
80	-22897																																																																																																																																																																																																																												
81	-23554																																																																																																																																																																																																																												
82	-24221																																																																																																																																																																																																																												
83	-24898																																																																																																																																																																																																																												
84	-25585																																																																																																																																																																																																																												
85	-26282																																																																																																																																																																																																																												
86	-26989																																																																																																																																																																																																																												
87	-27706																																																																																																																																																																																																																												
88	-28433																																																																																																																																																																																																																												
89	-29170																																																																																																																																																																																																																												
90	-29917																																																																																																																																																																																																																												
91	-30674																																																																																																																																																																																																																												
92	-31441																																																																																																																																																																																																																												
93	-32218																																																																																																																																																																																																																												
94	-33005																																																																																																																																																																																																																												
95	-33802																																																																																																																																																																																																																												
96	-34609																																																																																																																																																																																																																												
97	-35426																																																																																																																																																																																																																												
98	-36253																																																																																																																																																																																																																												
99	-37090																																																																																																																																																																																																																												
100	-37937																																																																																																																																																																																																																												
$x^2 + 4x - 5 = 0$	<p>NORMAL FLOAT AUTO REAL RADIAN HP</p> <p>Plot1 Plot2 Plot3</p> <p>$Y_1 = X^2 + 4X - 5$</p> <p>$Y_2 =$</p> <p>$Y_3 =$</p> <p>$Y_4 =$</p> <p>$Y_5 =$</p> <p>$Y_6 =$</p> <p>$Y_7 =$</p> <p>$Y_8 =$</p>	<p>NORMAL FLOAT AUTO REAL RADIAN HP</p> <p>PRESS + FOR ΔTbl</p> <table border="1"> <thead> <tr> <th>X</th> <th>Y1</th> </tr> </thead> <tbody> <tr><td>-7</td><td>16</td></tr> <tr><td>-6</td><td>7</td></tr> <tr><td>-5</td><td>0</td></tr> <tr><td>-4</td><td>-5</td></tr> <tr><td>-3</td><td>-10</td></tr> <tr><td>-2</td><td>-15</td></tr> <tr><td>-1</td><td>-20</td></tr> <tr><td>0</td><td>-25</td></tr> <tr><td>1</td><td>-30</td></tr> <tr><td>2</td><td>-35</td></tr> <tr><td>3</td><td>-40</td></tr> <tr><td>4</td><td>-45</td></tr> <tr><td>5</td><td>-50</td></tr> <tr><td>6</td><td>-55</td></tr> <tr><td>7</td><td>-60</td></tr> <tr><td>8</td><td>-65</td></tr> <tr><td>9</td><td>-70</td></tr> <tr><td>10</td><td>-75</td></tr> <tr><td>11</td><td>-80</td></tr> <tr><td>12</td><td>-85</td></tr> <tr><td>13</td><td>-90</td></tr> <tr><td>14</td><td>-95</td></tr> <tr><td>15</td><td>-100</td></tr> <tr><td>16</td><td>-105</td></tr> <tr><td>17</td><td>-110</td></tr> <tr><td>18</td><td>-115</td></tr> <tr><td>19</td><td>-120</td></tr> <tr><td>20</td><td>-125</td></tr> <tr><td>21</td><td>-130</td></tr> <tr><td>22</td><td>-135</td></tr> <tr><td>23</td><td>-140</td></tr> <tr><td>24</td><td>-145</td></tr> <tr><td>25</td><td>-150</td></tr> <tr><td>26</td><td>-155</td></tr> <tr><td>27</td><td>-160</td></tr> <tr><td>28</td><td>-165</td></tr> <tr><td>29</td><td>-170</td></tr> <tr><td>30</td><td>-175</td></tr> <tr><td>31</td><td>-180</td></tr> <tr><td>32</td><td>-185</td></tr> <tr><td>33</td><td>-190</td></tr> <tr><td>34</td><td>-195</td></tr> <tr><td>35</td><td>-200</td></tr> <tr><td>36</td><td>-205</td></tr> <tr><td>37</td><td>-210</td></tr> <tr><td>38</td><td>-215</td></tr> <tr><td>39</td><td>-220</td></tr> <tr><td>40</td><td>-225</td></tr> <tr><td>41</td><td>-230</td></tr> <tr><td>42</td><td>-235</td></tr> <tr><td>43</td><td>-240</td></tr> <tr><td>44</td><td>-245</td></tr> <tr><td>45</td><td>-250</td></tr> <tr><td>46</td><td>-255</td></tr> <tr><td>47</td><td>-260</td></tr> <tr><td>48</td><td>-265</td></tr> <tr><td>49</td><td>-270</td></tr> <tr><td>50</td><td>-275</td></tr> <tr><td>51</td><td>-280</td></tr> <tr><td>52</td><td>-285</td></tr> <tr><td>53</td><td>-290</td></tr> <tr><td>54</td><td>-295</td></tr> <tr><td>55</td><td>-300</td></tr> <tr><td>56</td><td>-305</td></tr> <tr><td>57</td><td>-310</td></tr> <tr><td>58</td><td>-315</td></tr> <tr><td>59</td><td>-320</td></tr> <tr><td>60</td><td>-325</td></tr> <tr><td>61</td><td>-330</td></tr> <tr><td>62</td><td>-335</td></tr> <tr><td>63</td><td>-340</td></tr> <tr><td>64</td><td>-345</td></tr> <tr><td>65</td><td>-350</td></tr> <tr><td>66</td><td>-355</td></tr> <tr><td>67</td><td>-360</td></tr> <tr><td>68</td><td>-365</td></tr> <tr><td>69</td><td>-370</td></tr> <tr><td>70</td><td>-375</td></tr> <tr><td>71</td><td>-380</td></tr> <tr><td>72</td><td>-385</td></tr> <tr><td>73</td><td>-390</td></tr> <tr><td>74</td><td>-395</td></tr> <tr><td>75</td><td>-400</td></tr> <tr><td>76</td><td>-405</td></tr> <tr><td>77</td><td>-410</td></tr> <tr><td>78</td><td>-415</td></tr> <tr><td>79</td><td>-420</td></tr> <tr><td>80</td><td>-425</td></tr> <tr><td>81</td><td>-430</td></tr> <tr><td>82</td><td>-435</td></tr> <tr><td>83</td><td>-440</td></tr> <tr><td>84</td><td>-445</td></tr> <tr><td>85</td><td>-450</td></tr> <tr><td>86</td><td>-455</td></tr> <tr><td>87</td><td>-460</td></tr> <tr><td>88</td><td>-465</td></tr> <tr><td>89</td><td>-470</td></tr> <tr><td>90</td><td>-475</td></tr> <tr><td>91</td><td>-480</td></tr> <tr><td>92</td><td>-485</td></tr> <tr><td>93</td><td>-490</td></tr> <tr><td>94</td><td>-495</td></tr> <tr><td>95</td><td>-500</td></tr> <tr><td>96</td><td>-505</td></tr> <tr><td>97</td><td>-510</td></tr> <tr><td>98</td><td>-515</td></tr> <tr><td>99</td><td>-520</td></tr> <tr><td>100</td><td>-525</td></tr> </tbody> </table> <p>X=-2</p>	X	Y1	-7	16	-6	7	-5	0	-4	-5	-3	-10	-2	-15	-1	-20	0	-25	1	-30	2	-35	3	-40	4	-45	5	-50	6	-55	7	-60	8	-65	9	-70	10	-75	11	-80	12	-85	13	-90	14	-95	15	-100	16	-105	17	-110	18	-115	19	-120	20	-125	21	-130	22	-135	23	-140	24	-145	25	-150	26	-155	27	-160	28	-165	29	-170	30	-175	31	-180	32	-185	33	-190	34	-195	35	-200	36	-205	37	-210	38	-215	39	-220	40	-225	41	-230	42	-235	43	-240	44	-245	45	-250	46	-255	47	-260	48	-265	49	-270	50	-275	51	-280	52	-285	53	-290	54	-295	55	-300	56	-305	57	-310	58	-315	59	-320	60	-325	61	-330	62	-335	63	-340	64	-345	65	-350	66	-355	67	-360	68	-365	69	-370	70	-375	71	-380	72	-385	73	-390	74	-395	75	-400	76	-405	77	-410	78	-415	79	-420	80	-425	81	-430	82	-435	83	-440	84	-445	85	-450	86	-455	87	-460	88	-465	89	-470	90	-475	91	-480	92	-485	93	-490	94	-495	95	-500	96	-505	97	-510	98	-515	99	-520	100	-525	<p>NORMAL FLOAT AUTO REAL RADIAN HP</p>
X	Y1																																																																																																																																																																																																																												
-7	16																																																																																																																																																																																																																												
-6	7																																																																																																																																																																																																																												
-5	0																																																																																																																																																																																																																												
-4	-5																																																																																																																																																																																																																												
-3	-10																																																																																																																																																																																																																												
-2	-15																																																																																																																																																																																																																												
-1	-20																																																																																																																																																																																																																												
0	-25																																																																																																																																																																																																																												
1	-30																																																																																																																																																																																																																												
2	-35																																																																																																																																																																																																																												
3	-40																																																																																																																																																																																																																												
4	-45																																																																																																																																																																																																																												
5	-50																																																																																																																																																																																																																												
6	-55																																																																																																																																																																																																																												
7	-60																																																																																																																																																																																																																												
8	-65																																																																																																																																																																																																																												
9	-70																																																																																																																																																																																																																												
10	-75																																																																																																																																																																																																																												
11	-80																																																																																																																																																																																																																												
12	-85																																																																																																																																																																																																																												
13	-90																																																																																																																																																																																																																												
14	-95																																																																																																																																																																																																																												
15	-100																																																																																																																																																																																																																												
16	-105																																																																																																																																																																																																																												
17	-110																																																																																																																																																																																																																												
18	-115																																																																																																																																																																																																																												
19	-120																																																																																																																																																																																																																												
20	-125																																																																																																																																																																																																																												
21	-130																																																																																																																																																																																																																												
22	-135																																																																																																																																																																																																																												
23	-140																																																																																																																																																																																																																												
24	-145																																																																																																																																																																																																																												
25	-150																																																																																																																																																																																																																												
26	-155																																																																																																																																																																																																																												
27	-160																																																																																																																																																																																																																												
28	-165																																																																																																																																																																																																																												
29	-170																																																																																																																																																																																																																												
30	-175																																																																																																																																																																																																																												
31	-180																																																																																																																																																																																																																												
32	-185																																																																																																																																																																																																																												
33	-190																																																																																																																																																																																																																												
34	-195																																																																																																																																																																																																																												
35	-200																																																																																																																																																																																																																												
36	-205																																																																																																																																																																																																																												
37	-210																																																																																																																																																																																																																												
38	-215																																																																																																																																																																																																																												
39	-220																																																																																																																																																																																																																												
40	-225																																																																																																																																																																																																																												
41	-230																																																																																																																																																																																																																												
42	-235																																																																																																																																																																																																																												
43	-240																																																																																																																																																																																																																												
44	-245																																																																																																																																																																																																																												
45	-250																																																																																																																																																																																																																												
46	-255																																																																																																																																																																																																																												
47	-260																																																																																																																																																																																																																												
48	-265																																																																																																																																																																																																																												
49	-270																																																																																																																																																																																																																												
50	-275																																																																																																																																																																																																																												
51	-280																																																																																																																																																																																																																												
52	-285																																																																																																																																																																																																																												
53	-290																																																																																																																																																																																																																												
54	-295																																																																																																																																																																																																																												
55	-300																																																																																																																																																																																																																												
56	-305																																																																																																																																																																																																																												
57	-310																																																																																																																																																																																																																												
58	-315																																																																																																																																																																																																																												
59	-320																																																																																																																																																																																																																												
60	-325																																																																																																																																																																																																																												
61	-330																																																																																																																																																																																																																												
62	-335																																																																																																																																																																																																																												
63	-340																																																																																																																																																																																																																												
64	-345																																																																																																																																																																																																																												
65	-350																																																																																																																																																																																																																												
66	-355																																																																																																																																																																																																																												
67	-360																																																																																																																																																																																																																												
68	-365																																																																																																																																																																																																																												
69	-370																																																																																																																																																																																																																												
70	-375																																																																																																																																																																																																																												
71	-380																																																																																																																																																																																																																												
72	-385																																																																																																																																																																																																																												
73	-390																																																																																																																																																																																																																												
74	-395																																																																																																																																																																																																																												
75	-400																																																																																																																																																																																																																												
76	-405																																																																																																																																																																																																																												
77	-410																																																																																																																																																																																																																												
78	-415																																																																																																																																																																																																																												
79	-420																																																																																																																																																																																																																												
80	-425																																																																																																																																																																																																																												
81	-430																																																																																																																																																																																																																												
82	-435																																																																																																																																																																																																																												
83	-440																																																																																																																																																																																																																												
84	-445																																																																																																																																																																																																																												
85	-450																																																																																																																																																																																																																												
86	-455																																																																																																																																																																																																																												
87	-460																																																																																																																																																																																																																												
88	-465																																																																																																																																																																																																																												
89	-470																																																																																																																																																																																																																												
90	-475																																																																																																																																																																																																																												
91	-480																																																																																																																																																																																																																												
92	-485																																																																																																																																																																																																																												
93	-490																																																																																																																																																																																																																												
94	-495																																																																																																																																																																																																																												
95	-500																																																																																																																																																																																																																												
96	-505																																																																																																																																																																																																																												
97	-510																																																																																																																																																																																																																												
98	-515																																																																																																																																																																																																																												
99	-520																																																																																																																																																																																																																												
100	-525																																																																																																																																																																																																																												

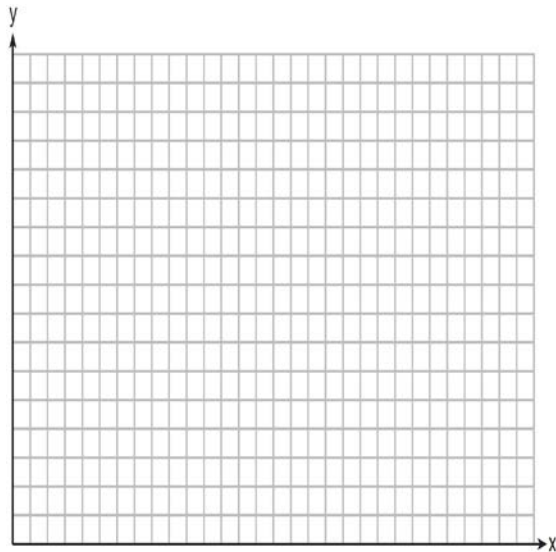
REGENTS EXAM QUESTIONS (through June 2018)

F.IF.B.4, F.IF.C.7: Graphing Quadratic Functions

- 224) Let $h(t) = -16t^2 + 64t + 80$ represent the height of an object above the ground after t seconds. Determine the number of seconds it takes to achieve its maximum height. Justify your answer.

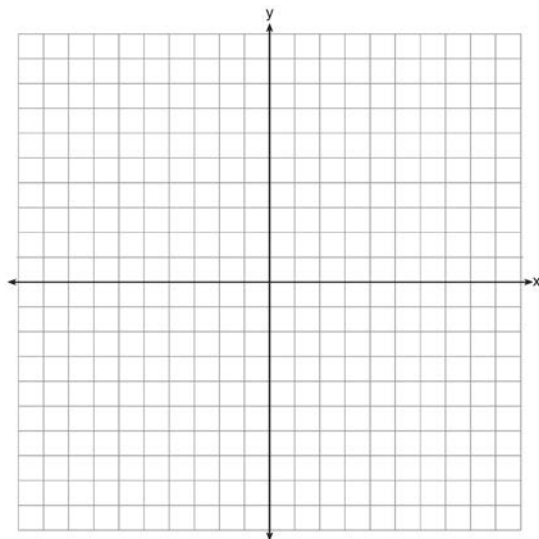
State the time interval, in seconds, during which the height of the object *decreases*. Explain your reasoning.

- 225) A toy rocket is launched from the ground straight upward. The height of the rocket above the ground, in feet, is given by the equation $h(t) = -16t^2 + 64t$, where t is the time in seconds. Determine the domain for this function in the given context. Explain your reasoning.
- 226) A ball is thrown into the air from the edge of a 48-foot-high cliff so that it eventually lands on the ground. The graph below shows the height, y , of the ball from the ground after x seconds.



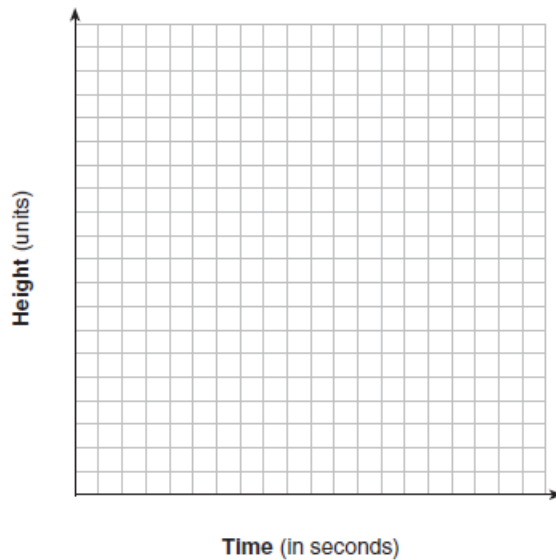
Determine the vertex of $y = h(x)$. Interpret the meaning of this vertex in the context of the problem. The goal post is 10 feet high and 45 yards away from the kick. Will the ball be high enough to pass over the goal post? Justify your answer.

- 230) On the set of axes below, draw the graph of $y = x^2 - 4x - 1$.



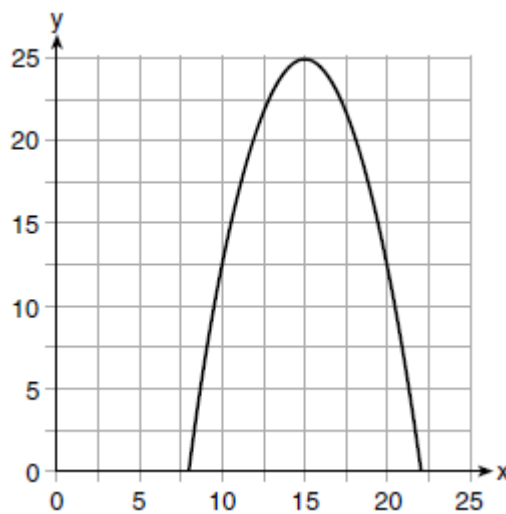
State the equation of the axis of symmetry.

- 231) If the zeros of a quadratic function, F , are -3 and 5 , what is the equation of the axis of symmetry of F ? Justify your answer.
- 232) Alex launched a ball into the air. The height of the ball can be represented by the equation $h = -8t^2 + 40t + 5$, where h is the height, in units, and t is the time, in seconds, after the ball was launched. Graph the equation from $t = 0$ to $t = 5$ seconds.



State the coordinates of the vertex and explain its meaning in the context of the problem.

- 233) An Air Force pilot is flying at a cruising altitude of 9000 feet and is forced to eject from her aircraft. The function $h(t) = -16t^2 + 128t + 9000$ models the height, in feet, of the pilot above the ground, where t is the time, in seconds, after she is ejected from the aircraft. Determine and state the vertex of $h(t)$. Explain what the second coordinate of the vertex represents in the context of the problem. After the pilot was ejected, what is the maximum number of feet she was above the aircraft's cruising altitude? Justify your answer.
- 234) The expression $-4.9t^2 + 50t + 2$ represents the height, in meters, of a toy rocket t seconds after launch. The initial height of the rocket, in meters, is
- 1) 0
 - 2) 2
 - 3) 4.9
 - 4) 50
- 235) The graph of a quadratic function is shown below.



An equation that represents the function could be

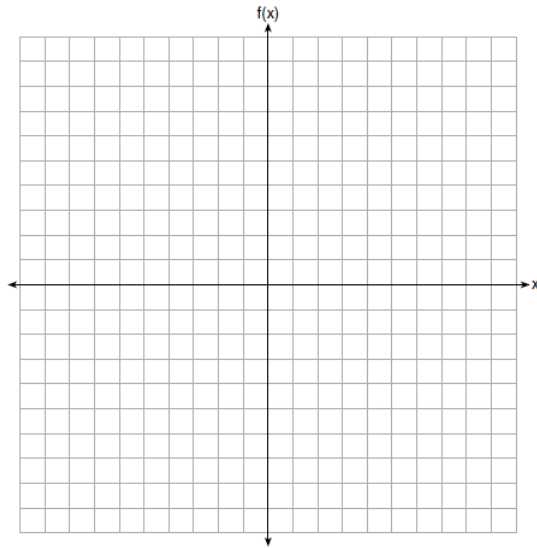
1) $q(x) = \frac{1}{2}(x+15)^2 - 25$

3) $q(x) = \frac{1}{2}(x-15)^2 + 25$

2) $q(x) = -\frac{1}{2}(x+15)^2 - 25$

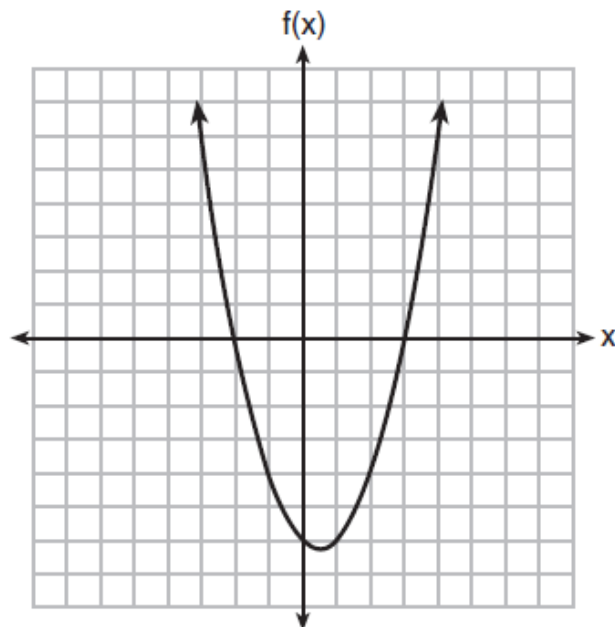
4) $q(x) = -\frac{1}{2}(x-15)^2 + 25$

236) Graph the function $f(x) = -x^2 - 6x$ on the set of axes below.



State the coordinates of the vertex of the graph.

237) The graph of the function $f(x) = ax^2 + bx + c$ is given below.



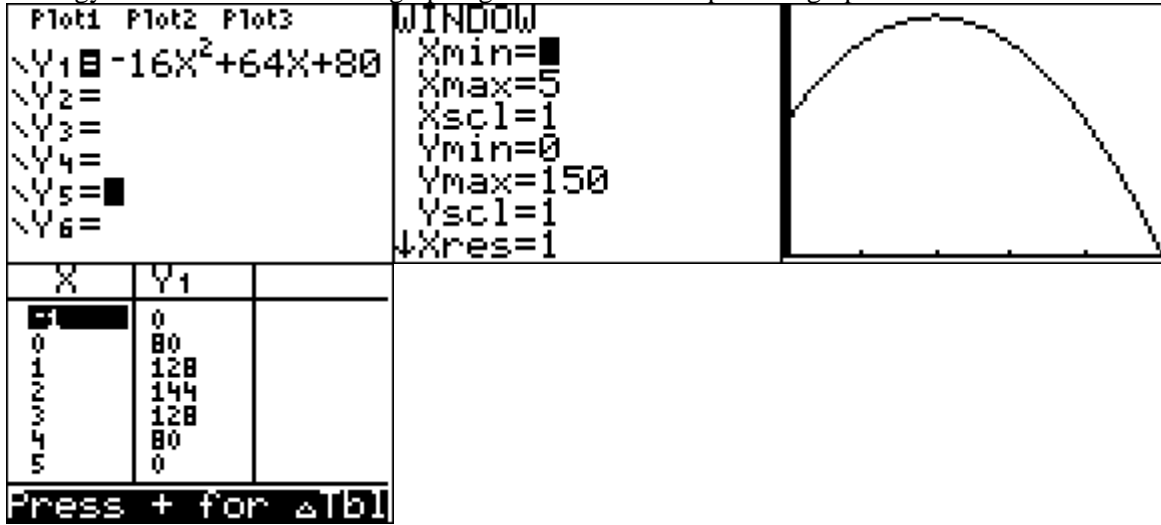
Could the factors of $f(x)$ be $(x+2)$ and $(x-3)$? Based on the graph, explain why or why *not*.

- 238) When an apple is dropped from a tower 256 feet high, the function $h(t) = -16t^2 + 256$ models the height of the apple, in feet, after t seconds. Determine, algebraically, the number of seconds it takes the apple to hit the ground.

SOLUTIONS

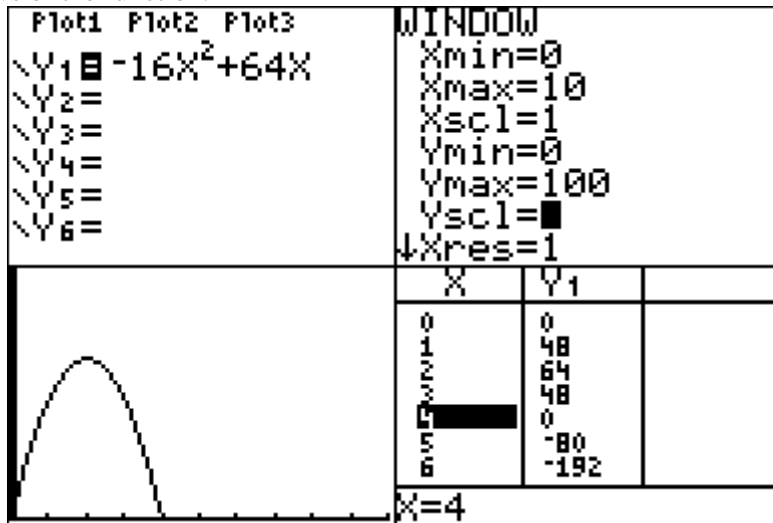
- 224) ANS:
 The object reaches its maximum height at 2 seconds.
 The height of the object decreases between 2 seconds and 5 seconds.

Strategy: Input the function in a graphing calculator and inspect the graph and table of values.



PTS: 4 NAT: F.IF.B.4 TOP: Graphing Quadratic Functions

- 225) ANS:
 The rocket launches at $t = 0$ and lands at $t = 4$, so the domain of the function is $0 \leq x \leq 4$.
 Strategy: Input the function into a graphing calculator and determine the flight of the rocket using the graph and table views of the function.



The toy rocket is in the air between 0 and 4 seconds, so the domain of the function is $0 \leq x \leq 4$.

PTS: 2 NAT: F.IF.B.4 TOP: Graphing Quadratic Functions

- 226) ANS: 3

Strategy: Identify the domain of x that corresponds to a negative slope (decreasing height) in the function, then eliminate wrong answers.

STEP 1. The axis of symmetry for the parabola is $x = 2.5$ and the graph has a negative slope after $x = 2.5$ all the way to $x = 5.5$, meaning that the height of the ball is decreasing over this interval.

STEP 2. Eliminate wrong answers.

Answer choice a can be eliminated because the the slope of the graph increases over the interval $0 \leq x \leq 2.5$.

Answer choice b can be eliminated because the the slope of the graph both increases and decreases over the interval $0 \leq x \leq 2.5$.

Answer choice c is the correct choice, because it shows the domain of x where the graph has a negative slope.

Answer choice d can be eliminated because the the slope of the graph increases from $x \geq 2$ until $x = 2.5$.

PTS: 2 NAT: F.IF.B.4 TOP: Graphing Quadratic Functions

227) ANS: 1

$$h(t) = -16t^2 + 24t$$

$$0 = -16t^2 + 24t$$

$$0 = -8t(2t - 3)$$

$$-8t = 0 \quad \text{and} \quad 2t - 3 = 0$$

$$t = \frac{0}{-8} \quad \quad \quad 2t = 3$$

$$t = 0 \quad \quad \quad t = \frac{3}{2}$$

The appropriate domain for this function is $0 \leq t \leq 1.5$.

PTS: 2 NAT: F.IF.B.4 TOP: Graphing Quadratic Functions

KEY: context

228) ANS: 3

Strategy: Eliminate wrong answers.

Eliminate “The rocket was launched from a height of 180 feet” because the ordered pair $(0, 180)$ indicates this statement is true.

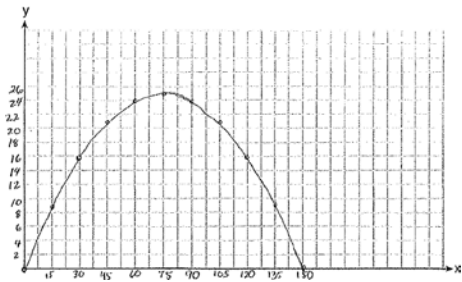
Eliminate “The maximum height of the rocket occurred 3 seconds after launch” because the ordered pair $(3, 324)$ is the vertex of the parabola modeled by the table.

Select “The rocket was in the air approximately 6 seconds before hitting the ground” because the ordered pair $(7, 68)$ shows that the rocket had not yet hit the ground after 7 seconds.

Eliminate “The rocket was above 300 feet for approximately 2 seconds” because the rocket was above 300 feet during the 2 second interval between the ordered pairs $(2, 308)$ and $(4, 308)$.

PTS: 2 NAT: F.IF.B.4

229) ANS:



- a)
- b) The vertex is at $(75, 25)$. This means that the ball will reach it highest (25 feet) when the horizontal distance is 75 feet.
- c) No, the ball will not clear the goal post because it will be less than 10 feet high.

Strategy: Input the equation into a graphing calculator and use the table and graph views to complete the graph on paper, then find the vertex and determine if the ball will pass over the goal post.

STEP 1. Input $h(x) = -\frac{1}{225}x^2 + \frac{2}{3}x$ into a graphing calculator. Set the window to reflect the interval $0 \leq x \leq 150$ and estimate the height to be approximately $\frac{1}{3}$ the domain of x .

Plot1 Plot2 Plot3 $Y_1 = -(1/225)X^2 + \frac{2}{3}X$ $Y_2 =$ $Y_3 =$ $Y_4 =$ $Y_5 =$ $Y_6 =$		WINDOW $X_{min}=0$ $X_{max}=150$ $X_{scl}=1$ $Y_{min}=0$ $Y_{max}=50$ $Y_{scl}=1$ $X_{res}=1$			
X	Y1	X	Y1		
0	0	13	7.9156		
1	.66222	14	8.4622		
2	1.3156	15	9		
3	1.96	16	9.5289		
4	2.5956	17	10.049		
5	3.2222	18	10.56		
6	3.84	19	11.062		
Press + for ΔTbl X=19					

Observe that the table of values has integer solutions at 15 unit intervals, so change the ΔTbl to 15.

TABLE SETUP $TblStart=0$ $\Delta Tbl=1$ Indent: Auto Ask Depend: Auto Ask	TABLE SETUP $TblStart=0$ $\Delta Tbl=15$ Indent: Auto Ask Depend: Auto Ask
---	--

The change in ΔTbl results in a table of values that is easier to graph on paper.

X	Y1	X	Y1
0	0	0	0
15	9	15	9
30	16	30	16
45	21	45	21
60	24	60	24
75	25	75	25
90	24	90	24
Press + for ΔTbl Press + for ΔTbl			

Use the graph view and the table of values to complete the graph on paper.

STEP 2. Use the table of values to find the vertex. The vertex is located at $(75, 25)$.

X	Y ₁	
30	16	
45	21	
60	24	
75	25	
90	24	
105	21	
120	16	

X=75

STEP 3. Convert 45 yards to 135 feet and determine if the the ball will be 10 feet or higher when $x = 135$

X	Y ₁	
90	24	
105	21	
120	16	
135	9	
150	0	
165	-11	
180	-24	

X=135

$$\text{or } y = -\frac{1}{225}(135)^2 + \frac{2}{3}(135) = -81 + 90 = 9$$

The ball will be 9 feet above the ground and will not go over the 10 feet high goal post.

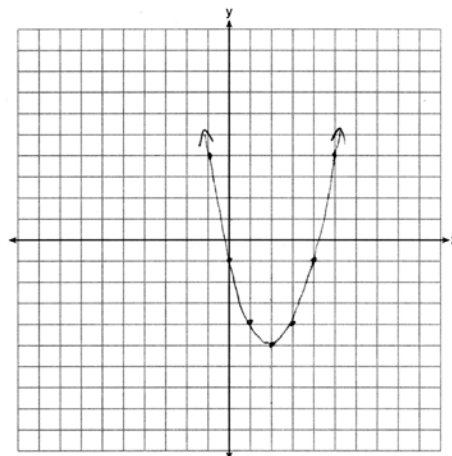
PTS: 6 NAT: F.IF.B.4 TOP: Graphing Quadratic Functions

230) ANS:

Input the equation in a graphing calculator, then use the table and graph views to draw the graph.

Plot1 Plot2 Plot3 $Y_1 = X^2 - 4X - 1$ $Y_2 =$ $Y_3 =$ $Y_4 =$ $Y_5 =$ $Y_6 =$		<table border="1"> <thead> <tr> <th>X</th> <th>Y₁</th> <th></th> </tr> </thead> <tbody> <tr><td>-1</td><td>-5</td><td></td></tr> <tr><td>0</td><td>-1</td><td></td></tr> <tr><td>1</td><td>0</td><td></td></tr> <tr><td>2</td><td>1</td><td></td></tr> <tr><td>3</td><td>2</td><td></td></tr> <tr><td>4</td><td>3</td><td></td></tr> <tr><td>5</td><td>4</td><td></td></tr> <tr><td>6</td><td>5</td><td></td></tr> <tr><td>7</td><td>6</td><td></td></tr> <tr><td>8</td><td>7</td><td></td></tr> <tr><td>9</td><td>8</td><td></td></tr> <tr><td>10</td><td>9</td><td></td></tr> </tbody> </table> <p>X=-1</p>	X	Y ₁		-1	-5		0	-1		1	0		2	1		3	2		4	3		5	4		6	5		7	6		8	7		9	8		10	9	
X	Y ₁																																								
-1	-5																																								
0	-1																																								
1	0																																								
2	1																																								
3	2																																								
4	3																																								
5	4																																								
6	5																																								
7	6																																								
8	7																																								
9	8																																								
10	9																																								

The axis of symmetry is $x = 2$



The equation for the axis of symmetry can also be found using the formula $x = \frac{-b}{2a} = \frac{-(-4)}{2(1)} = \frac{4}{2} = 2$

PTS: 2 NAT: F.IF.B.4 TOP: Graphing Quadratic Functions
 NOT: NYSED classifies this as A.REI.D

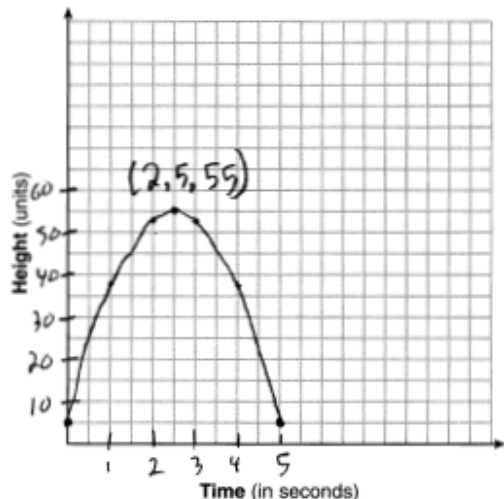
231) ANS:
 The equation of the axis of symmetry is $x = 1$.

The axis of symmetry is the vertical line that is midway between the zeros of a quadratic.

$$\frac{-3 + 5}{2} = 1$$

PTS: 2 NAT: F.IF.B.4 TOP: Graphing Quadratic Functions
 KEY: no context

232) ANS:



The ball reaches a maximum height of 55 units at 2.5 seconds.

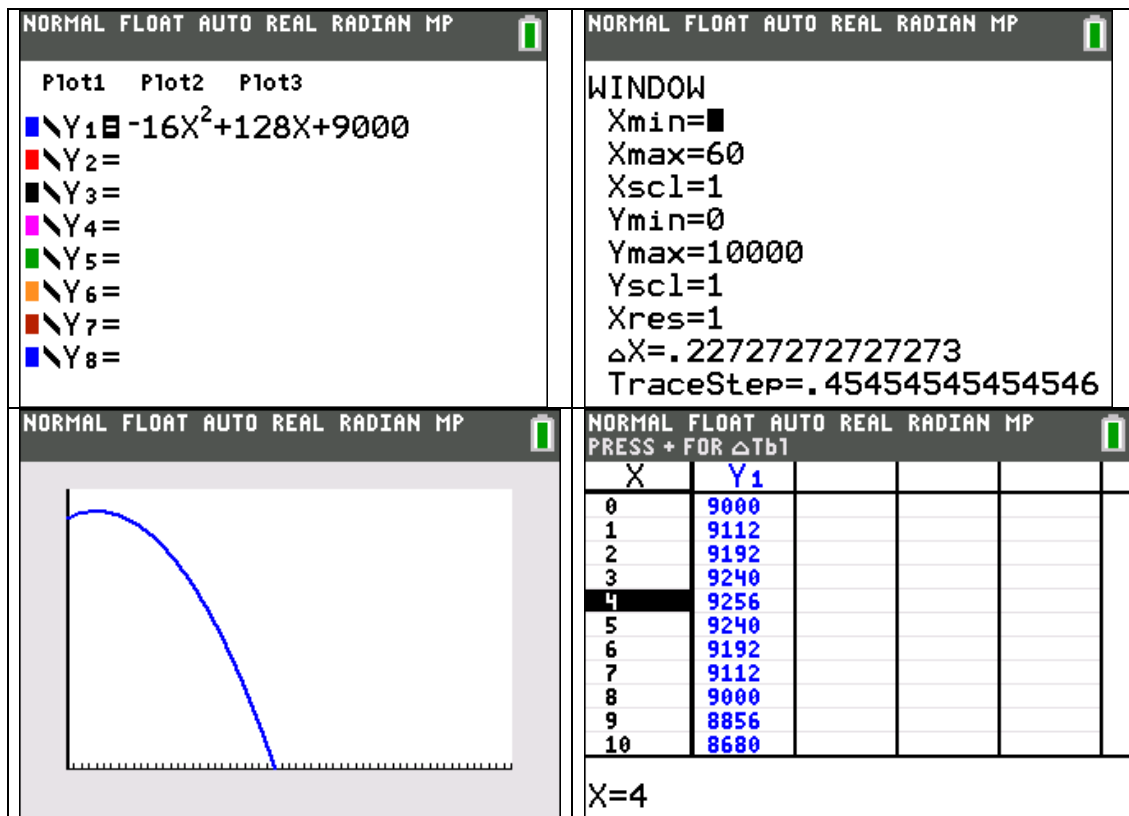
Strategy: Input the equation in a graphing calculator, then use the table of values to plot the graph and answer the questions.

NORMAL FLOAT AUTO REAL RADIAN MP			NORMAL FLOAT AUTO REAL RADIAN MP				
Plot1	Plot2	Plot3	X	Y1			
$-8X^2 + 40X + 5$			0	5			
			1	37			
			2	53			
			3	53			
			4	37			
			5	5			
			6	-43			
			7	-107			
			8	-187			
			9	-283			
			10	-395			
			X=0				

PTS: 4 NAT: F.IF.B.4 TOP: Graphing Quadratic Functions

233) ANS:
 The vertex occurs at (4, 9256). This means that 4 seconds after the pilot ejects from the plane, she is 9,256 feet above the ground.

After being ejected at a cruising altitude of 9,000 feet, the maximum number of feet she was above cruising altitude was $9256 - 9000 = 256$ feet.



PTS: 4 NAT: F.IF.B.4 TOP: Graphing Quadratic Functions

KEY: context

234) ANS: 2

The initial height of the rocket is when $t = 0$.

$$-4.9t^2 + 50t + 2$$

$$-4.9(0)^2 + 50(0) + 2$$

$$0 + 0 + 2$$

$$2$$

PTS: 2 NAT: F.IF.B.4 TOP: Graphing Quadratic Functions

KEY: context

235) ANS: 4

The graph shows the vertex to be at (15, 25).

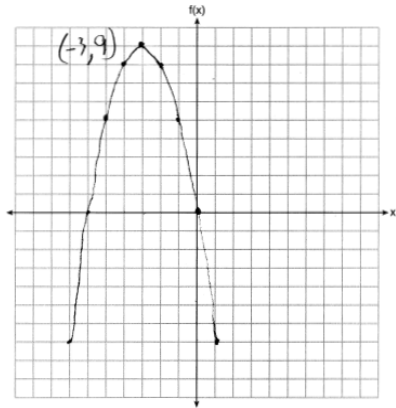
Each of the answer choices is in vertex form: $y = a(x - h)^2 + k$, where h is the x-coordinate of the vertex and k is the y-coordinate of the vertex. Substituting the x and y coordinates of the vertex into $y = a(x - h)^2 + k$ results in $y = a(x - 15)^2 + 25$. Since the parabola opens downward, the value of a must

be negative. The correct answer is $q(x) = -\frac{1}{2}(x - 15)^2 + 25$.

PTS: 2 NAT: F.IF.B.4 TOP: Graphing Quadratic Functions

KEY: no context

236) ANS:



x	y
0	0
-1	5
-2	8
-3	9
-4	8
-5	5
-6	0

HINT: Use graphing calculator!

The coordinates of the vertex are $(-3, 9)$

PTS: 2 NAT: F.IF.B.4 TOP: Graphing Quadratic Functions

KEY: no context

237) ANS:

Yes, because the factors of a function and the zeros of a function are related through the multiplication property of zero. The multiplication property of zero states that the product of any number and zero is zero. This also means that if the product of two numbers is zero, then one or both of the factors must be zero.

If the factors of $f(x)$ are $(x + 2)$ and $(x - 3)$, then the function rule is $f(x) = (x + 2)(x - 3)$ and the zeros of the function will occur when $f(x) = 0$. By the multiplication property of zero, when $(x + 2)(x - 3) = 0$, either $(x + 2)$, $(x - 3)$, or both $(x + 2)$ and $(x - 3)$, must equal zero.

If $(x + 2) = 0$, then $x = -2$, which is shown as an x-intercept on the graph.

If $(x - 3) = 0$, then $x = 3$, which is also shown as an x-intercept on the graph.

PTS: 2 NAT: F.IF.C.7 TOP: Graphing Quadratic Functions

238) ANS:

Answer: 4

Strategy: The apple will be on the ground when its height is zero, so evaluate the function

$h(t) = -16t^2 + 256$ for $h(t) = 0$.

$$h(t) = -16t^2 + 256$$

$$0 = -16t^2 + 256$$

$$16t^2 = 256$$

$$t^2 = 16$$

$$t = 4$$

Check:

$$h(4) = -16(4)^2 + 256$$

$$h(4) = -16(16) + 256$$

$$h(4) = -256 + 256$$

$$h(4) = 0$$

PTS: 2 NAT: F.IF.C.7 TOP: Graphing Quadratic Functions